

# Jack

LIVING STORAGE UNITS

2018

Michael Anastassiades



## Description

Classic yet contemporary, essential yet extremely flexible, the Jack wall system is offered in two versions: with vertical floor to ceiling uprights, or with rods to be fixed to the wall. The modularity and discrete technical solutions underlying the project make it possible to create compositions for every room and furnishing context. The system features numerous elements which can be combined to increase the system's functionality. These include new, deeper shelves, storage elements such as drawers, and flap doors. From an aesthetic point of view, all the elements of the Jack wall system are available in two colours, to which Canaletto walnut and four oak finishes are added as an option for the shelves and storage units.

## Technical information

**Frame**

die-cast aluminium and extrusions

**Shelves**

painted or veneered HPL stratified laminate

**Storage units**

painted or veneered MDF wood fibre panel

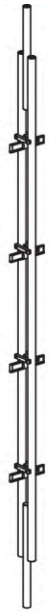
**Drawer frame**

MDF wood fibre panels, wood particles panels

**Ferrules and regulators**

steel

# Technical drawings



28 mm  
1 1/8"

prof. / depth / Tiefe  
85 mm - 3 3/8"



28 mm  
1 1/8"

prof. / depth / Tiefe  
85 mm - 3 3/8"



28 mm  
1 1/8"

prof. / depth / Tiefe  
85 mm - 3 3/8"



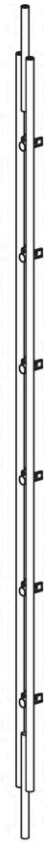
28 mm  
1 1/8"

prof. / depth / Tiefe  
85 mm - 3 3/8"



28 mm  
1 1/8"

prof. / depth / Tiefe  
85 mm - 3 3/8"



28 mm  
1 1/8"

prof. / depth / Tiefe  
85 mm - 3 3/8"



28 mm  
1 1/8"

prof. / depth / Tiefe  
221 - 271 mm / 8 5/8" - 10 5/8"



28 mm  
1 1/8"

prof. / depth / Tiefe  
221 - 271 mm / 8 5/8" - 10 5/8"



28 mm  
1 1/8"

prof. / depth / Tiefe  
221 - 271 mm / 8 5/8" - 10 5/8"



28 mm  
1 1/8"

prof. / depth / Tiefe  
221 - 271 mm / 8 5/8" - 10 5/8"



28 mm  
1 1/8"

prof. / depth / Tiefe  
221 - 271 mm / 8 5/8" - 10 5/8"



28 mm  
1 1/8"

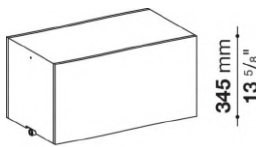
prof. / depth / Tiefe  
221 - 271 mm / 8 5/8" - 10 5/8"



prof. / depth / Tiefe  
300 mm - 11 3/4"



prof. / depth / Tiefe  
400 mm - 15 3/4"



prof. / depth / Tiefe  
400 mm - 15 3/4"



prof. / depth / Tiefe  
400 mm - 15 3/4"