

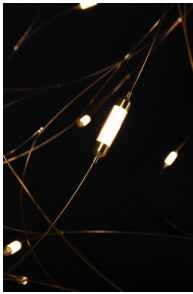
Flock of Light

STUDIO TOER



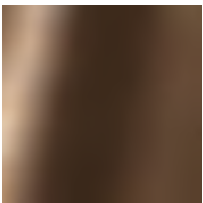
Flock of Light by Studio Toer tells the story of nature with lights inspired by the movement of fireflies. Fine bronze wires create elegant, curved lines while the brass cups and LED diffusers act as glowing beetles dancing in the air. The playful light transforms from a light, airy design by day to a swarm of warm lights at night – bringing elegance and warmth to any room.

Detailing



Like standing amidst a swarm of buzzing bright lights. Flock of Light captures the magic of a warm summer evening.

Colours



Flock of Light

Flock of Light / 11

Dimensions

80cm | 31.5"

65cm | 25.6"



65cm | 25.6"



Product

WIDTH 80cm | 31.5"

HEIGHT 65cm | 25.6"

DEPTH 65cm | 25.6"

WEIGHT NETTO 0.9kg | 1.98lbs

Packaging

WIDTH 57cm | 22.4"

HEIGHT 57cm | 22.4"

CUBAGE 0.21m³ | 7.34ft³

LENGTH 64cm | 25.2"

WEIGHT 2.5kg | 5.51lbs

Technical CE

MATERIAL

bronze wires, brass cups with semi-transparent polycarbonate diffusers

ENERGY LABEL

A+

INSTALLATION REQUIRED

Yes

LIGHTSOURCE TYPE

LED

LIGHTSOURCE INCLUDED

Yes

NUMBER OF LIGHTSOURCES

11

SHAPE

Abstract

INPUT VOLTAGE

220-240V

FREQUENCY

50/60

MAX POWER CONSUMPTION

12W

LAMPHOLDER

LED (Solid state)

LIFETIME

50000 hours

CABLE COLOUR

Transparent with tinned cores

CABLE LENGTH

250cm | 98.4"

CANOPY

Pebble II White, ABS

COLOUR TEMPERATURE

2500 K (max)

CRI

91

LIGHT DIRECTION

All directions

LIGHT OUTPUT

1240 lm

DIMMING & LIGHTING CONTROL

Mains, Trailing edge, Reverse phase, Wireless Wall
Switch + Driver (dimmer)

See last page for more information about the dimming possibilities.



*Technical UL***MATERIAL**

bronze wires, brass cups with semi-transparent polycarbonate diffusers

ENERGY LABEL

A+

INSTALLATION REQUIRED

Yes

LIGHTSOURCE TYPE

LED

LIGHTSOURCE INCLUDED

Yes

NUMBER OF LIGHTSOURCES

11

SHAPE

Abstract

INPUT VOLTAGE

110-130V

FREQUENCY

50/60

MAX POWER CONSUMPTION

12W

LAMPHOLDER

LED (Solid state)

LIFETIME

50000 hours

CABLE COLOUR

Transparent with tinned cores

CABLE LENGTH

250cm | 98.4"

CANOPY

Pebble II White, ABS

COLOUR TEMPERATURE

2500 K (max)

CRI

91

LIGHT DIRECTION

All directions

LIGHT OUTPUT

1240 lm

DIMMING & LIGHTING CONTROL

Mains, Trailing edge, Reverse phase

See last page for more information about the dimming possibilities.



Flock of Light / 21

Dimensions

135cm | 53.2"



80cm | 31.5"

85cm | 33.5"



Product

WIDTH 135cm | 53.1"

HEIGHT 80cm | 31.5"

DEPTH 85cm | 33.5"

WEIGHT NETTO 1.4kg | 3.09lbs

Packaging

WIDTH 77cm | 30.3"

HEIGHT 57cm | 22.4"

CUBAGE 0.48m³ | 17.05ft³

LENGTH 110cm | 43.3"

WEIGHT 4kg | 8.82lbs

Technical CE / CCC

MATERIAL

bronze wires, brass cups with semi-transparent polycarbonate diffusers

ENERGY LABEL

A+

LIGHTSOURCE TYPE

LED

NUMBER OF LIGHTSOURCES

21

FREQUENCY

50/60

LAMPHOLDER

LED (Solid state)

CABLE COLOUR

Transparent with tinned cores

CANOPY

Pebble II White, ABS

CRI

91

LIGHT OUTPUT

2308 lm

INSTALLATION REQUIRED

Yes

LIGHTSOURCE INCLUDED

Yes

INPUT VOLTAGE

220-240V

MAX POWER CONSUMPTION

22W

LIFETIME

50000 hours

CABLE LENGTH

250cm | 98.4"

COLOUR TEMPERATURE

2500 K (max)

LIGHT DIRECTION

All directions

DIMMING & LIGHTING CONTROL

Mains, Trailing edge, Reverse phase, Wireless Wall Switch + Driver (dimmer)

See last page for more information about the dimming possibilities.



Technical UL

MATERIAL

bronze wires, brass cups with semi-transparent polycarbonate diffusers

ENERGY LABEL

A+

LIGHTSOURCE TYPE

LED

NUMBER OF LIGHTSOURCES

21

FREQUENCY

50/60

LAMPHOLDER

LED (Solid state)

CABLE COLOUR

Transparent with tinned cores

CANOPY

Pebble II White, ABS

CRI

91

LIGHT OUTPUT

2308 lm

INSTALLATION REQUIRED

Yes

LIGHTSOURCE INCLUDED

Yes

INPUT VOLTAGE

110-130V

MAX POWER CONSUMPTION

22W

LIFETIME

50000 hours

CABLE LENGTH

250cm | 98.4"

COLOUR TEMPERATURE

2500 K (max)

LIGHT DIRECTION

All directions

DIMMING & LIGHTING CONTROL

Mains, Trailing edge, Reverse phase

See last page for more information about the dimming possibilities.



Flock of Light / 31

Dimensions

180 cm | 70.9"

100 cm | 39.4"



80cm | 31.5"

Product

WIDTH 180cm | 70.9"

HEIGHT 80cm | 31.5"

DEPTH 100cm | 39.4"

WEIGHT NETTO 1.4kg | 3.09lbs

Packaging

WIDTH 94cm | 37"

HEIGHT 66cm | 26"

CUBAGE 0.85m³ | 30.02ft³

LENGTH 137cm | 53.9"

WEIGHT 10kg | 22.05lbs

Technical CE / CCC / UL

ADDITIONAL

Flock of Light 31 is compatible with our Wireless Wall Switch, for quick and easy dimming that gives you full control over the light output.

MATERIAL

bronze wires, brass cups with semi-transparent polycarbonate diffusers

INSTALLATION REQUIRED

Yes

LIGHTSOURCE TYPE

LED

LIGHTSOURCE INCLUDED

Yes

NUMBER OF LIGHTSOURCES

31

INPUT VOLTAGE

120-250V

FREQUENCY

50/60

MAX POWER CONSUMPTION

24W

LAMPHOLDER

LED (Solid state)

LIFETIME

50000 hours

CABLE COLOUR

Transparent with tinned cores

CABLE LENGTH

250cm | 98.4"

CANOPY

Pebble III White, ABS

CHROM X

0.477

CHROM Y

0.412

COLOUR TEMPERATURE

2500 K (max)

CRI

91

LIGHT DIRECTION

All directions

LIGHT OUTPUT

2582 lm

R9

0

DIMMING & LIGHTING CONTROL

Wireless Wall Switch (dimmer), DALI dt6, Push / Pulse dim on Line Voltage, Smart Home Integration (Zigbee), Mains / ELV dimming is not possible, Smart Home Integration (Matter)

See last page for more information about the dimming possibilities.



Dimming & Lighting Control

Mains, Trailing edge, Reverse phase

Control the mood with ease. This light fixture can be dimmed using an external Electronic Low Voltage dimmer. Simply connect it to an existing outlet—no need to rewire your home. Choose a dimmer designed for LED lights, suitable for 5 watts or lower, and supporting a C-type (capacitive load). This ensures compatibility and smooth operation. As with all delicate lighting, the experience of dimming may occasionally bring a flicker, hum, or soft buzz.

Compatible models: 11 CE, 11 UL, 21 CE, 21 CCC, 21 UL

Wireless Wall Switch + Driver (dimmer)

With our Wireless Wall Switch + Driver set, you'll have full control over your Moooi lighting design with one touch. Our Wireless Wall Switch comprises two components, a wall switch and radio device to put in the canopy of your Moooi lighting design. The Wall Switch can also be integrated in existing System 55 (i.e. Gira and Jung) or Decora style wall switches. Once the radio device is installed you will also have the possibility to control your light fixture with the Casambi App available in the Google Play and Apple app store. Within moments you can enjoy full and fluent dimming, all the way to dark.

Compatible models: 11 CE, 21 CE, 21 CCC

Wireless Wall Switch (dimmer)

With our Wireless Wall Switch, you'll have full control over your Moooi lighting design with one touch. Our Wireless Wall Switch comprises two components, a wall switch and radio device to put in the canopy of your Moooi lighting design. The Wall Switch can also be integrated in existing System 55 (i.e. Gira and Jung) or Decora style wall switches. Once the radio device is installed you will also have the possibility to control your light fixture with the Casambi App available in the Google Play and Apple app store. Within moments you can enjoy full and fluent dimming, all the way to dark.

Compatible models: 31 CE, 31 CCC, 31 UL

DALI dt6

The luminaire is dimmable by integrating it into a DALI network. This is an universal and professional standard in home automation systems with endless control possibilities and ease. We advise to hire a professional to integrate the luminaire into your DALI network.

Compatible models: 31 CE, 31 CCC, 31 UL

Push / Pulse dim on Line Voltage

The luminaire is dimmable by using an external momentary switch or pushbutton switch. The switch is usually mounted on an existing wall socket. In some cases a Phase or Control wire needs to be added to your home's wiring. The switch should be suitable for use with line voltage and of the type 'normal off - momentary on'. The luminaire dims perfectly when the switch makes and holds contact. A short press switches between on and off.

Compatible models: 31 CE, 31 CCC, 31 UL

Smart Home Integration (Zigbee)

By adding a Zigbee converter this light fixture can seamlessly integrate into a Zigbee 3.0-based smart home network, such as Philips Hue, Amazon Alexa, Google Home, Ikea Tradfri and Homey. This integration allows for wireless control and compatibility with other smart home systems, without the need to change your home's wiring. To enable this, simply add a Zigbee converter to your luminaire. We recommend the Sunricher Zigbee to Dali Converter for its reliability and compatibility with the US 110 voltage or the Osram 4062172044776 Zigbee 3.0 DALI Converter LI for 210-220V Please note that this converter is sold by third-party vendors and not directly by Moooi and this should be installed by a professional electrician.

Compatible models: 31 CE, 31 CCC, 31 UL

Mains / ELV dimming is not possible

Mains and/or ELV dimming is not possible. The wireless wall switch is advised for dimming in this case.

Compatible models: 31 CE, 31 CCC, 31 UL

Smart Home Integration (Matter)

Using the Matter Dali Bridge / Converter this Light can seamlessly integrate in your Matter Smart Home system like Apple Home, Google Home, Home Assistant, Amazon Alexa, Samsung SmartThings and Homey. We recommend the M2D Bridge Converter for its reliability and compatibility. Please note that this converter is sold by third-party vendors and not directly by Moooi and this should be installed by a professional electrician.

Compatible models: 31 CE, 31 CCC, 31 UL
