

m o o o i

Zio Lounge Chair

MARCEL WANDERS



Lean back, close your eyes, relax your arms on the smooth armrests and grant yourself the time to drift your imagination away, beyond your surroundings, into the street, beyond the starry night. Living your fantasies is easy while cosily sitting in the solid softness of Marcel Wanders Zio lounge chair!

Detailing



The Zio Lounge Chair unites the strong, yet light look of stained oak with the beauty of organic shapes, finished off with straight modern cuts.

Colours



CAT 1

Solis, Dawn

Zio Lounge Chair

Dimensions

77cm | 30.3"



85cm | 33.5"



40cm | 15.7"



76cm | 29.9"

Product

WIDTH 77cm | 30.3"

HEIGHT 76cm | 29.9"

DEPTH 85cm | 33.5"

WEIGHT NETTO 18.8kg | 41.45lbs

Packaging

WIDTH 84.5cm | 33.3"

HEIGHT 90cm | 35.4"

CUBAGE 0.64m³ | 22.69ft³

LENGTH 84.5cm | 33.3"

WEIGHT 20.8kg | 45.86lbs

Technical

ADDITIONAL

Frame available in different stain colours.

MATERIAL

Solid Oak frame, CMHR foam

HEIGHT ARMREST

61cm | 24"

SEAT DEPTH 2

51cm | 20.1"

SEAT HEIGHT 2

36cm | 14.2"

SEAT WIDTH 2

63cm | 24.8"

SEATING CAPACITY

1

SEAT DEPTH

58cm | 22.8"

SEAT HEIGHT

41cm | 16.1"

SEAT WIDTH

67cm | 26.4"

WEIGHT CAPACITY

110kg | 242.51lbs

Upholstery

Abbracci (available in 6 colours)



COMPOSITION
100% PES

ABRASION
50000 martindale
lightfastness 3 - 4
pilling 5

FIRE RESISTANCE
BS 5852 - Ignition source
0 (Cigarette)
BS 5852 - Ignition source
1 (Match flame equivalent)
EN 1021-1 (Cigarette)
EN 1021-2 (Match)
TB 117-2013

Arda (available in 12 colours)



ABRASION
50000 martindale
lightfastness 5 - 6
pilling 4 - 5

FIRE RESISTANCE
BS 5852 - Ignition source
0 (Cigarette)
BS 5852 - Ignition source
5 (Crib 5)
BS 5852 - Ignition source
1 (Match flame equivalent)
EN 1021-1 (Cigarette)
EN 1021-2 (Match)
TB 117-2013
EU Ecolabel

Autumn (available in 14 colours)

Boucle (available in 5 colours)



COMPOSITION
43% CO, 14% PA, 12% CV,
3% PES, 28% PAN

ABRASION
40000 martindale
lightfastness 4 - 6
pilling 4 - 5

FIRE RESISTANCE
EN 1021-1 (Cigarette)
EN 1021-2 (Match)

Divina 3 (available in 56 colours)



COMPOSITION
100% WO

ABRASION
45000 martindale
lightfastness 7
pilling 3

FIRE RESISTANCE
BS 5852 - Ignition source
0 (Cigarette)
BS 5852 - Ignition source
5 (Crib 5)
BS 5852 - Ignition source
1 (Match flame equivalent)
EN 1021-1 (Cigarette)
EN 1021-2 (Match)
TB 117-2013
EU Ecolabel

Divina MD (available in 27 colours)



COMPOSITION
100% WO

ABRASION
45000 martindale
lightfastness 6
pilling 3

FIRE RESISTANCE
BS 5852 - Ignition source
0 (Cigarette)
BS 5852 - Ignition source
5 (Crib 5)
BS 5852 - Ignition source
1 (Match flame equivalent)
EN 1021-1 (Cigarette)
EN 1021-2 (Match)
EU Ecolabel

Divina Melange 3 (available in 49 colours)



COMPOSITION
100% WO

ABRASION
45000 martindale
lightfastness 6 - 7
pilling 3

FIRE RESISTANCE
BS 5852 - Ignition source
0 (Cigarette)
BS 5852 - Ignition source
5 (Crib 5)
BS 5852 - Ignition source
1 (Match flame equivalent)
EN 1021-1 (Cigarette)
EN 1021-2 (Match)
TB 117-2013
EU Ecolabel

Bearded Leopard (available in 3 colours)



COMPOSITION

77% CV, 15% PES, 7% CO,
1% PA

ABRASION

15000 martindale
lightfastness 4 - 6
pilling 4

Blushing Sloth (available in 1 colour)



Calligraphy Bird (available in 4 colours)



COMPOSITION

64% CV, 21% PES, 15%
CO

ABRASION

50000 martindale
lightfastness 4 - 6
pilling 5

Dandelion Cranes (available in 1 colour)



Dodo Pavone (available in 3 colours)



COMPOSITION

12% CO, 88% PES

ABRASION

40000 martindale
lightfastness 5
pilling 4 - 5

Golden Tiger (available in 1 colours)



Memento Moooi Medley (available in 1 colours)



COMPOSITION

100% PES

ABRASION

50000 martindale
lightfastness 4 - 6
pilling 5

FIRE RESISTANCE

EN 1021-1 (Cigarette)
EN 1021-2 (Match)
TB 117-2013

Menagerie of Extinct Animals (available in 2 colours)



COMPOSITION

100% PES

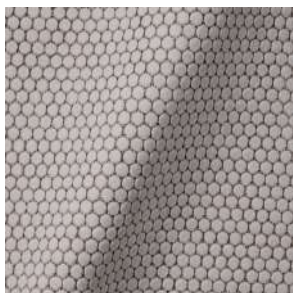
ABRASION

50000 martindale
lightfastness 4 - 6
pilling 5

FIRE RESISTANCE

EN 1021-1 (Cigarette)
EN 1021-2 (Match)
TB 117-2013

Pogo Goat (available in 1 colours)



Queen Cobra (available in 1 colours)



Rendezvous Tokyo Blue (available in 1 colours)



COMPOSITION

100% PES

ABRASION

50000 martindale
lightfastness 4 - 6
pilling 5

Blushing Sloth Melange Mohair (available in 1 colours)



COMPOSITION

85% WV, 15% WM

ABRASION

15000 martindale
lightfastness 4 - 6
pilling 2 - 3

Blushing Sloth Woolly Mohair (available in 1 colours)



COMPOSITION

24% PES, 15% PA, 8% CO,
24% WM, 29% WV

ABRASION

40000 martindale
lightfastness 4 - 6
pilling 3 - 4

Fiord 2 (available in 39 colours)



COMPOSITION

92% WV, 8% PA

ABRASION

60000 martindale
lightfastness 6
pilling 4 - 5

FIRE RESISTANCE

EN 1021-1 (Cigarette)
EN 1021-2 (Match)
BS 5852 - Ignition source
0 (Cigarette)
BS 5852 - Ignition source
1 (Match flame equivalent)

Guest (available in 13 colours)

Hallingdal 65 (available in 58 colours)



COMPOSITION

30% CV, 70% WV

ABRASION

100000 martindale
lightfastness 7
pilling 3 - 4

FIRE RESISTANCE

BS 5852 - Ignition source
0 (Cigarette)
BS 5852 - Ignition source
5 (Crib 5)
BS 5852 - Ignition source
1 (Match flame equivalent)
EN 1021-1 (Cigarette)
EN 1021-2 (Match)
TB 117-2013
EU Ecolabel

Harald 3 (available in 29 colours)



COMPOSITION
100% CO

ABRASION
100000 martindale
lightfastness 5
pilling 4 - 5

FIRE RESISTANCE
EN 1021-1 (Cigarette)

Justo (available in 11 colours)



COMPOSITION
15% CO, 35% PC, 10% PA,
40% CV

ABRASION
50000 martindale
lightfastness 5
pilling 4

FIRE RESISTANCE
EN 1021-1 (Cigarette)
EN 1021-2 (Match)
TB 117-2013

Liscio (available in 6 colours)

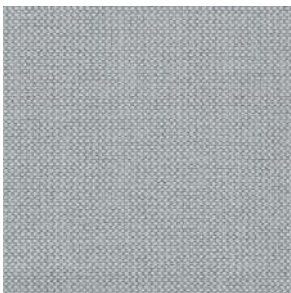


COMPOSITION
35% WO, 35% CV, 21%
CO, 9% PA

ABRASION
30000 martindale
lightfastness 4 - 6
pilling 4

FIRE RESISTANCE
TB 117-2013

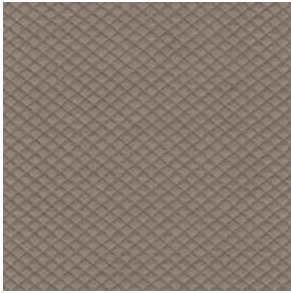
Merit (available in 43 colours)



COMPOSITION
24% PES, 76%

ABRASION
85000 martindale
lightfastness 7
pilling 4

Mosaic 2 (available in 15 colours)



COMPOSITION

58% PES, 27% WV, 9% PA,
6% EA

ABRASION

100000 martindale
lightfastness 6 - 7
pilling 4 - 5

Oray Ray (available in 15 colours)

COMPOSITION

39% LI, 38% CV, 15% PE,
8% CO

ABRASION

30000 martindale
pilling 4 - 5

FIRE RESISTANCE

BS 5852 - Ignition source
0 (Cigarette)
BS 5852 - Ignition source
1 (Match flame equivalent)
TB 117-2013

Oray Ronan (available in 5 colours)



COMPOSITION

39% LI, 38% CV, 15% PE,
8% CO

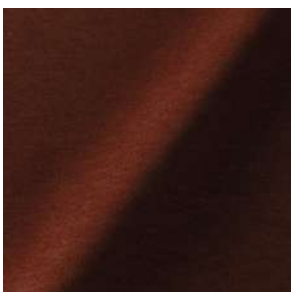
ABRASION

30000 martindale
pilling 4 - 5

FIRE RESISTANCE

BS 5852 - Ignition source
0 (Cigarette)
BS 5852 - Ignition source
1 (Match flame equivalent)
TB 117-2013

Palette (available in 12 colours)



COMPOSITION

42% CO, 29% WO, 29%
TL

ABRASION

45000 martindale
lightfastness 4 - 5
pilling 3 - 3

FIRE RESISTANCE

BS 5852 - Ignition source
0 (Cigarette)
TB 117-2013
BS 5852 - Ignition source
5 (Crib 5)

Reflect (available in 35 colours)

Remix 3 (available in 54 colours)



COMPOSITION

10% PA, 90% WV

ABRASION

100000 martindale
lightfastness 5
pilling 4

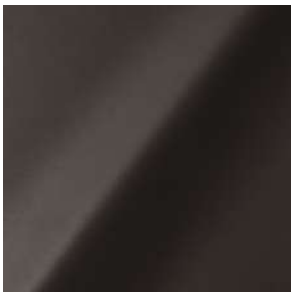
Savanne (available in 3 colours)



FIRE RESISTANCE

EN 1021-1 (Cigarette)
EN 1021-2 (Match)
TB 117-2013
OEKO-TEX

Shade (available in 5 colours)



ABRASION

lightfastness 3 - 4

FIRE RESISTANCE

EN 1021-1 (Cigarette)
EN 1021-2 (Match)
TB 117-2013

Solis (available in 9 colours)



COMPOSITION

60% WO, 30% PES, 2%
PA, 3% PC

ABRASION

40000 martindale
lightfastness 5
pilling 3 - 4

FIRE RESISTANCE

EN 1021-1 (Cigarette)
EN 1021-2 (Match)
TB 117-2013

Spectrum (available in 11 colours)



ABRASION

lightfastness 6 - 6

FIRE RESISTANCE

EN 1021-1 (Cigarette)
EN 1021-2 (Match)
TB 117-2013
OEKO-TEX

Sprinkles (available in 23 colours)



ABRASION

80000 martindale
lightfastness 7
pilling 4

FIRE RESISTANCE

EU Ecolabel
BS 5852 - Ignition source
0 (Cigarette)
BS 5852 - Ignition source
5 (Crib 5)
BS 5852 - Ignition source
1 (Match flame equivalent)
EN 1021-1 (Cigarette)
EN 1021-2 (Match)
TB 117-2013

Steelcut Trio 3 (available in 54 colours)



COMPOSITION

90% WV, 10% PA

ABRASION

100000 martindale
lightfastness 5
pilling 4

FIRE RESISTANCE

BS 5852 - Ignition source
0 (Cigarette)
BS 5852 - Ignition source
1 (Match flame equivalent)
EN 1021-1 (Cigarette)
EN 1021-2 (Match)
EU Ecolabel

Ultra (available in 6 colours)



ABRASION

lightfastness 6 - 7

FIRE RESISTANCE

EN 1021-1 (Cigarette)
EN 1021-2 (Match)
TB 117-2013
ANSI/BIFMA M7.1 (Total
Volatile Organic
Compounds)

Vesper (available in 9 colours)



COMPOSITION

10% CO, 40% LI, 10% PA,
10% PES, 30% CV

ABRASION

40000 martindale
lightfastness 5
pilling 4

FIRE RESISTANCE

EN 1021-1 (Cigarette)
EN 1021-2 (Match)
TB 117-2013
