

# Hortensia Armchair

ANDRÉS REISINGER & JÚLIA ESQUÉ



Hortensia Armchair, designed by Andrés Reisinger & Júlia Esqué, is inspired by the beauty of blooming flowers. Its soft, voluminous curves are upholstered with over 30,000 laser-cut petals, offering the perfect balance of comfort and intrigue. Available in a wide variety of fabrics and leathers, it brings nature's beauty to your interior.

## *Detailing*



The armchair's curves and signature fabric are inspired by Hortensia flowers: a voluminous plant with blooming petals.

## *Colours*



Petal Grey



Petal Ivory



Petal Pink



Petal Sage



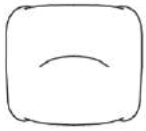
Petal Wine

CAT 1

# Hortensia Armchair

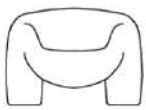
## Dimensions

**107cm | 42.1"**

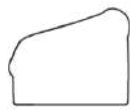


**95cm | 37.4"**

**55cm | 21.7"**



**43cm | 16.9"**



**76cm | 29.9"**

## Product

**WIDTH** 107cm | 42.1"

**HEIGHT** 76cm | 29.9"

**DEPTH** 95cm | 37.4"

**WEIGHT NETTO** 48.3kg | 106.48lbs

## Packaging

**WIDTH** 104cm | 40.9"

**HEIGHT** 83cm | 32.7"

**CUBAGE** 1m<sup>3</sup> | 35.36ft<sup>3</sup>

**LENGTH** 116cm | 45.7"

**WEIGHT** 62.5kg | 137.79lbs

## Technical

### MATERIAL

Moulded foam on metal frame

### HEIGHT ARMREST

53cm | 20.9"

### HEIGHT ARMREST 2

67cm | 26.4"

### SEAT DEPTH

54cm | 21.3"

### SEAT HEIGHT

43cm | 16.9"

### SEAT HEIGHT 2

38cm | 15"

### SEAT WIDTH

55cm | 21.7"

### WEIGHT CAPACITY

110kg | 242.51lbs

### SEATING CAPACITY

1

## Upholstery

*Arda (available in 12 colours)*



**ABRASION**

50000 martindale  
lightfastness 5 - 6  
pilling 4 - 5

**FIRE RESISTANCE**

BS 5852 - Ignition source  
0 (Cigarette)  
BS 5852 - Ignition source  
5 (Crib 5)  
BS 5852 - Ignition source  
1 (Match flame equivalent)  
EN 1021-1 (Cigarette)  
EN 1021-2 (Match)  
TB 117-2013  
EU Ecolabel

---

*Autumn (available in 14 colours)*

---

*Boucle (available in 5 colours)*



**COMPOSITION**

43% CO, 14% PA, 12% CV,  
3% PES, 28% PAN

**ABRASION**

40000 martindale  
lightfastness 4 - 6  
pilling 4 - 5

**FIRE RESISTANCE**

EN 1021-1 (Cigarette)  
EN 1021-2 (Match)

---

*Divina 3 (available in 56 colours)*



**COMPOSITION**

100% WO

**ABRASION**

45000 martindale  
lightfastness 7  
pilling 3

**FIRE RESISTANCE**

BS 5852 - Ignition source  
0 (Cigarette)  
BS 5852 - Ignition source  
5 (Crib 5)  
BS 5852 - Ignition source  
1 (Match flame equivalent)  
EN 1021-1 (Cigarette)  
EN 1021-2 (Match)  
TB 117-2013  
EU Ecolabel

*Divina MD (available in 27 colours)*



**COMPOSITION**

100% WO

**ABRASION**

45000 martindale  
lightfastness 6  
pilling 3

**FIRE RESISTANCE**

BS 5852 - Ignition source  
0 (Cigarette)  
BS 5852 - Ignition source  
5 (Crib 5)  
BS 5852 - Ignition source  
1 (Match flame equivalent)  
EN 1021-1 (Cigarette)  
EN 1021-2 (Match)  
EU Ecolabel

---

*Divina Melange 3 (available in 49 colours)*



**COMPOSITION**

100% WO

**ABRASION**

45000 martindale  
lightfastness 6 - 7  
pilling 3

**FIRE RESISTANCE**

BS 5852 - Ignition source  
0 (Cigarette)  
BS 5852 - Ignition source  
5 (Crib 5)  
BS 5852 - Ignition source  
1 (Match flame equivalent)  
EN 1021-1 (Cigarette)  
EN 1021-2 (Match)  
TB 117-2013  
EU Ecolabel

---

*Bearded Leopard (available in 3 colours)*



**COMPOSITION**

77% CV, 15% PES, 7% CO,  
1% PA

**ABRASION**

15000 martindale  
lightfastness 4 - 6  
pilling 4

*Blushing Sloth* (available in 1 colours)



*Calligraphy Bird* (available in 4 colours)



**COMPOSITION**

64% CV, 21% PES, 15%  
CO

**ABRASION**

50000 martindale  
lightfastness 4 - 6  
pilling 5

*Dandelion Cranes* (available in 1 colours)



*Dodo Pavone* (available in 3 colours)



**COMPOSITION**

12% CO, 88% PES

**ABRASION**

40000 martindale  
lightfastness 5  
pilling 4 - 5

*Golden Tiger (available in 1 colours)*



---

*Queen Cobra (available in 1 colours)*



---

*Blushing Sloth Melange Mohair (available in 1 colours)*



**COMPOSITION**

85% WV, 15% WM

**ABRASION**

15000 martindale  
lightfastness 4 - 6  
pilling 2 - 3

---

*Blushing Sloth Woolly Mohair (available in 1 colours)*



**COMPOSITION**

24% PES, 15% PA, 8% CO,  
24% WM, 29% WV

**ABRASION**

40000 martindale  
lightfastness 4 - 6  
pilling 3 - 4

*Fiord 2 (available in 39 colours)*



**COMPOSITION**

92% WV, 8% PA

**ABRASION**

60000 martindale  
lightfastness 6  
pilling 4 - 5

**FIRE RESISTANCE**

EN 1021-1 (Cigarette)  
EN 1021-2 (Match)  
BS 5852 - Ignition source  
0 (Cigarette)  
BS 5852 - Ignition source  
1 (Match flame equivalent)

---

*Guest (available in 13 colours)*



**COMPOSITION**

30% CV, 70% WV

**ABRASION**

100000 martindale  
lightfastness 7  
pilling 3 - 4

**FIRE RESISTANCE**

BS 5852 - Ignition source  
0 (Cigarette)  
BS 5852 - Ignition source  
5 (Crib 5)  
BS 5852 - Ignition source  
1 (Match flame equivalent)  
EN 1021-1 (Cigarette)  
EN 1021-2 (Match)  
TB 117-2013  
EU Ecolabel

---

*Justo (available in 11 colours)*



**COMPOSITION**

15% CO, 35% PC, 10% PA,  
40% CV

**ABRASION**

50000 martindale  
lightfastness 5  
pilling 4

**FIRE RESISTANCE**

EN 1021-1 (Cigarette)  
EN 1021-2 (Match)  
TB 117-2013

---

*Liscio (available in 6 colours)*



**COMPOSITION**

35% WO, 35% CV, 21%  
CO, 9% PA

**ABRASION**

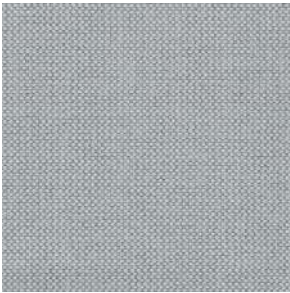
30000 martindale  
lightfastness 4 - 6  
pilling 4

**FIRE RESISTANCE**

TB 117-2013

---

*Merit (available in 43 colours)*



**COMPOSITION**

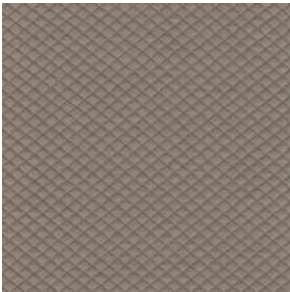
24% PES, 76%

**ABRASION**

85000 martindale  
lightfastness 7  
pilling 4

---

*Mosaic 2 (available in 15 colours)*



**COMPOSITION**

58% PES, 27% WV, 9% PA,  
6% EA

**ABRASION**

100000 martindale  
lightfastness 6 - 7  
pilling 4 - 5

---

*Palette (available in 12 colours)*



**COMPOSITION**

42% CO, 29% WO, 29%  
TL

**ABRASION**

45000 martindale  
lightfastness 4 - 5  
pilling 3 - 3

**FIRE RESISTANCE**

BS 5852 - Ignition source  
0 (Cigarette)  
TB 117-2013  
BS 5852 - Ignition source  
5 (Crib 5)

---

*Reflect (available in 35 colours)*

---

*Savanne (available in 3 colours)*



**FIRE RESISTANCE**

EN 1021-1 (Cigarette)

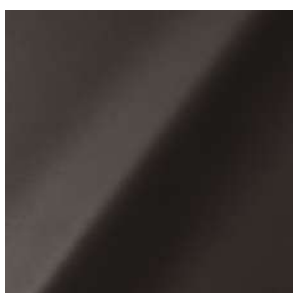
EN 1021-2 (Match)

TB 117-2013

OEKO-TEX

---

*Shade (available in 5 colours)*



**ABRASION**

lightfastness 3 - 4

**FIRE RESISTANCE**

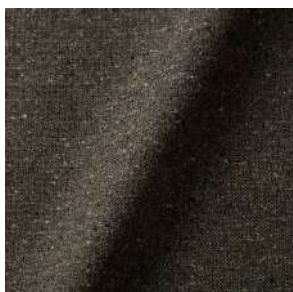
EN 1021-1 (Cigarette)

EN 1021-2 (Match)

TB 117-2013

---

*Solis (available in 9 colours)*



**COMPOSITION**

60% WO, 30% PES, 2%

PA, 3% PC

**ABRASION**

40000 martindale

lightfastness 5

pilling 3 - 4

**FIRE RESISTANCE**

EN 1021-1 (Cigarette)

EN 1021-2 (Match)

TB 117-2013

*Sprinkles (available in 23 colours)*



**ABRASION**

80000 martindale  
lightfastness 7  
pilling 4

**FIRE RESISTANCE**

EU Ecolabel  
BS 5852 - Ignition source  
0 (Cigarette)  
BS 5852 - Ignition source  
5 (Crib 5)  
BS 5852 - Ignition source  
1 (Match flame equivalent)  
EN 1021-1 (Cigarette)  
EN 1021-2 (Match)  
TB 117-2013

---

*Vesper (available in 9 colours)*



**COMPOSITION**

10% CO, 40% LI, 10% PA,  
10% PES, 30% CV

**ABRASION**

40000 martindale  
lightfastness 5  
pilling 4

**FIRE RESISTANCE**

EN 1021-1 (Cigarette)  
EN 1021-2 (Match)  
TB 117-2013

---