

m o o o i

Bart Pouf and Footstool

MOOOI



The indispensable items in a sitting room: poufs and footstools. The Bart Pouf and Footstool bring a cosy comfort in your home, combined with the Bart Sofa or Armchair, or as stand-alone pieces. Inspired by 18th-century Rococo, the Bart Pouf and Footstool bring 21st-century comfort with their friendly and rounded charm.

Detailing



The Bart Pouf & Footstool bring a touch of grandeur to your home without the formality of antiques.

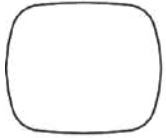
Colours

CAT 1

Bart Pouf and Footstool / Footstool

Dimensions

95cm | 37.4"



80cm | 31.5"



42cm | 16.5"

Product

WIDTH 95cm | 37.4"

HEIGHT 42cm | 16.5"

DEPTH 80cm | 31.5"

Packaging

WIDTH 76cm | 29.9"

HEIGHT 50cm | 19.7"

CUBAGE 0.33m³ | 11.81ft³

LENGTH 88cm | 34.6"

WEIGHT 20kg | 44.09lbs

Technical

MATERIAL

Wooden frame covered in foam and dacron, foam seat.

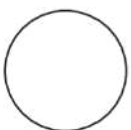
WEIGHT CAPACITY

110kg | 242.51lbs

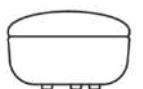
Bart Pouf and Footstool / Pouf

Dimensions

65cm | 25.6"



65cm | 25.6"



42cm | 16.5"

Product

WIDTH 65cm | 25.6"

HEIGHT 42cm | 16.5"

DEPTH 65cm | 25.6"

DIAMETER 65cm | 25.6"

Packaging

WIDTH 66cm | 26"

HEIGHT 50cm | 19.7"

CUBAGE 0.22m³ | 7.69ft³

LENGTH 66cm | 26"

WEIGHT 10kg | 22.05lbs

Technical

MATERIAL

Wooden frame covered in foam and dacron, foam seat.

WEIGHT CAPACITY

110kg | 242.51lbs

Upholstery

Arda (available in 12 colours)

**ABRASION**

50000 martindale
lightfastness 5 - 6
pilling 4 - 5

FIRE RESISTANCE

BS 5852 - Ignition source
0 (Cigarette)
BS 5852 - Ignition source
5 (Crib 5)
BS 5852 - Ignition source
1 (Match flame equivalent)
EN 1021-1 (Cigarette)
EN 1021-2 (Match)
TB 117-2013
EU Ecolabel

Autumn (available in 14 colours)

Boucle (available in 5 colours)

**COMPOSITION**

43% CO, 14% PA, 12% CV,
3% PES, 28% PAN

ABRASION

40000 martindale
lightfastness 4 - 6
pilling 4 - 5

FIRE RESISTANCE

EN 1021-1 (Cigarette)
EN 1021-2 (Match)

Divina 3 (available in 56 colours)



COMPOSITION
100% WO

ABRASION
45000 martindale
lightfastness 7
pilling 3

FIRE RESISTANCE
BS 5852 - Ignition source
0 (Cigarette)
BS 5852 - Ignition source
5 (Crib 5)
BS 5852 - Ignition source
1 (Match flame equivalent)
EN 1021-1 (Cigarette)
EN 1021-2 (Match)
TB 117-2013
EU Ecolabel

Divina MD (available in 27 colours)



COMPOSITION
100% WO

ABRASION
45000 martindale
lightfastness 6
pilling 3

FIRE RESISTANCE
BS 5852 - Ignition source
0 (Cigarette)
BS 5852 - Ignition source
5 (Crib 5)
BS 5852 - Ignition source
1 (Match flame equivalent)
EN 1021-1 (Cigarette)
EN 1021-2 (Match)
EU Ecolabel

Divina Melange 3 (available in 49 colours)



COMPOSITION
100% WO

ABRASION
45000 martindale
lightfastness 6 - 7
pilling 3

FIRE RESISTANCE
BS 5852 - Ignition source
0 (Cigarette)
BS 5852 - Ignition source
5 (Crib 5)
BS 5852 - Ignition source
1 (Match flame equivalent)
EN 1021-1 (Cigarette)
EN 1021-2 (Match)
TB 117-2013
EU Ecolabel

Bearded Leopard (available in 3 colours)



COMPOSITION

77% CV, 15% PES, 7% CO,
1% PA

ABRASION

15000 martindale
lightfastness 4 - 6
pilling 4

Blushing Sloth (available in 1 colour)



Dandelion Cranes (available in 1 colour)



Dodo Pavone (available in 3 colours)



COMPOSITION

12% CO, 88% PES

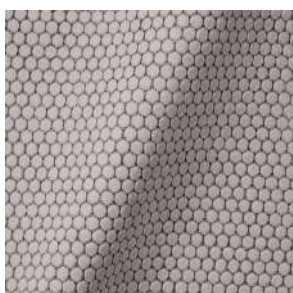
ABRASION

40000 martindale
lightfastness 5
pilling 4 - 5

Golden Tiger (available in 1 colours)



Pogo Goat (available in 1 colours)



Queen Cobra (available in 1 colours)



Blushing Sloth Melange Mohair (available in 1 colours)



COMPOSITION

85% WV, 15% WM

ABRASION

15000 martindale
lightfastness 4 - 6
pilling 2 - 3

Blushing Sloth Woolly Mohair (available in 1 colours)



COMPOSITION

24% PES, 15% PA, 8% CO,
24% WM, 29% WV

ABRASION

40000 martindale
lightfastness 4 - 6
pilling 3 - 4

Fiord 2 (available in 39 colours)



COMPOSITION

92% WV, 8% PA

ABRASION

60000 martindale
lightfastness 6
pilling 4 - 5

FIRE RESISTANCE

EN 1021-1 (Cigarette)
EN 1021-2 (Match)
BS 5852 - Ignition source
0 (Cigarette)
BS 5852 - Ignition source
1 (Match flame equivalent)

Guest (available in 13 colours)

Hallingdal 65 (available in 58 colours)



COMPOSITION

30% CV, 70% WV

ABRASION

100000 martindale
lightfastness 7
pilling 3 - 4

FIRE RESISTANCE

BS 5852 - Ignition source
0 (Cigarette)
BS 5852 - Ignition source
5 (Crib 5)
BS 5852 - Ignition source
1 (Match flame equivalent)
EN 1021-1 (Cigarette)
EN 1021-2 (Match)
TB 117-2013
EU Ecolabel

Harald 3 (available in 29 colours)



COMPOSITION
100% CO

ABRASION
100000 martindale
lightfastness 5
pilling 4 - 5

FIRE RESISTANCE
EN 1021-1 (Cigarette)

Justo (available in 11 colours)



COMPOSITION
15% CO, 35% PC, 10% PA,
40% CV

ABRASION
50000 martindale
lightfastness 5
pilling 4

FIRE RESISTANCE
EN 1021-1 (Cigarette)
EN 1021-2 (Match)
TB 117-2013

Liscio (available in 6 colours)

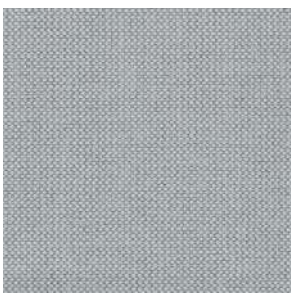


COMPOSITION
35% WO, 35% CV, 21%
CO, 9% PA

ABRASION
30000 martindale
lightfastness 4 - 6
pilling 4

FIRE RESISTANCE
TB 117-2013

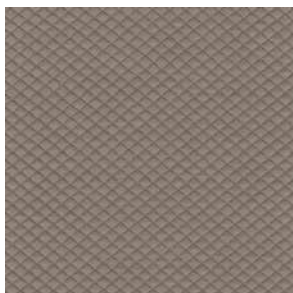
Merit (available in 43 colours)



COMPOSITION
24% PES, 76%

ABRASION
85000 martindale
lightfastness 7
pilling 4

Mosaic 2 (available in 15 colours)



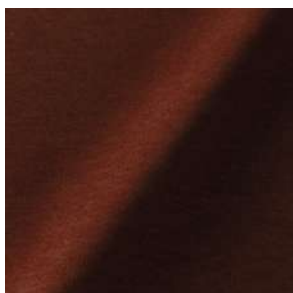
COMPOSITION

58% PES, 27% WV, 9% PA,
6% EA

ABRASION

100000 martindale
lightfastness 6 - 7
pilling 4 - 5

Palette (available in 12 colours)



COMPOSITION

42% CO, 29% WO, 29%
TL

ABRASION

45000 martindale
lightfastness 4 - 5
pilling 3 - 3

FIRE RESISTANCE

BS 5852 - Ignition source
0 (Cigarette)
TB 117-2013
BS 5852 - Ignition source
5 (Crib 5)

Reflect (available in 35 colours)

Remix 3 (available in 54 colours)



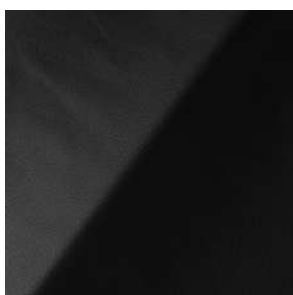
COMPOSITION

10% PA, 90% WV

ABRASION

100000 martindale
lightfastness 5
pilling 4

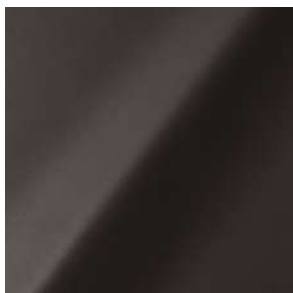
Savanne (available in 3 colours)



FIRE RESISTANCE

EN 1021-1 (Cigarette)
EN 1021-2 (Match)
TB 117-2013
OEKO-TEX

Shade (available in 5 colours)



ABRASION

lightfastness 3 - 4

FIRE RESISTANCE

EN 1021-1 (Cigarette)

EN 1021-2 (Match)

TB 117-2013

Solis (available in 9 colours)



COMPOSITION

60% WO, 30% PES, 2%
PA, 3% PC

ABRASION

40000 martindale

lightfastness 5

pilling 3 - 4

FIRE RESISTANCE

EN 1021-1 (Cigarette)

EN 1021-2 (Match)

TB 117-2013

Spectrum (available in 11 colours)



ABRASION

lightfastness 6 - 6

FIRE RESISTANCE

EN 1021-1 (Cigarette)

EN 1021-2 (Match)

TB 117-2013

OEKO-TEX

Sprinkles (available in 23 colours)



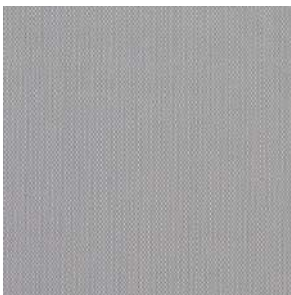
ABRASION

80000 martindale
lightfastness 7
pilling 4

FIRE RESISTANCE

EU Ecolabel
BS 5852 - Ignition source
0 (Cigarette)
BS 5852 - Ignition source
5 (Crib 5)
BS 5852 - Ignition source
1 (Match flame equivalent)
EN 1021-1 (Cigarette)
EN 1021-2 (Match)
TB 117-2013

Steelcut Trio 3 (available in 54 colours)



COMPOSITION

90% WV, 10% PA

ABRASION

100000 martindale
lightfastness 5
pilling 4

FIRE RESISTANCE

BS 5852 - Ignition source
0 (Cigarette)
BS 5852 - Ignition source
1 (Match flame equivalent)
EN 1021-1 (Cigarette)
EN 1021-2 (Match)
EU Ecolabel

Ultra (available in 6 colours)



ABRASION

lightfastness 6 - 7

FIRE RESISTANCE

EN 1021-1 (Cigarette)
EN 1021-2 (Match)
TB 117-2013
ANSI/BIFMA M7.1 (Total
Volatile Organic
Compounds)

Vesper (available in 9 colours)



COMPOSITION

10% CO, 40% LI, 10% PA,
10% PES, 30% CV

ABRASION

40000 martindale
lightfastness 5
pilling 4

FIRE RESISTANCE

EN 1021-1 (Cigarette)
EN 1021-2 (Match)
TB 117-2013
