

# JUNO

DRAGA & AUREL

**Struttura:** struttura circolare realizzata in cemento modellato in modo da creare delle plissettature verticali sulla superficie.

Con il tempo è possibile che si formino delle micro fessure, caratteristiche delle superfici in cemento.

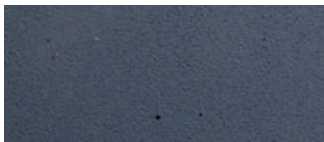
Cassa in legno dotata di due sensori per verifica di eventuali danni durante il trasporto.  
(Fare riferimento a "Avvertenze importanti").

**Frame:** round structure realized with moulded concrete in order to create vertical pleating on the surface.

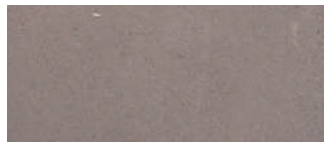
With the passing of time some micro-cracks may create, which are peculiar for cement surfaces.

Wooden crate equipped with two sensors to check for any damage during transport.  
(Refer to "Important information").

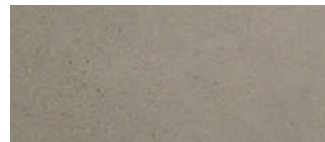
## FINITURE DISPONIBILI/AVAILABLE FINISHES



cemento blu  
blue concrete



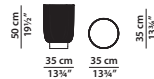
cemento tortora  
dove grey concrete



cemento verde muschio  
moss green concrete

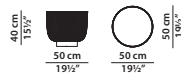
Ø35 h50 cm - Ø13¼ h19½"

Tavolino. Small table.



Ø50 h40 cm - Ø19½ h15½"

Tavolino. Small table.



Ø70 h30 cm - Ø27¼ h11¾"

Tavolino. Small table.

