

Sensei Desk

Tollgard + Castellani

2024



Desk with “deep black” lacquered metal structure and wooden top. Black open pore stained ash shelf and back. Resting on the wooden top, 12mm glass top with half bull-nose grinding in the exclusive finish “Rosso Marte” or painted as per samples in the bright version. Also available with 20mm brushed Ceppo di Gré®, satin Arabescato Orobito Rosso, brushed Bianco Carrara Gioia or satin Dover White.

Top available also covered by leather fard as per samples.

On request, black open pore stained ash drawer unit with removable metal trays covered by leather fard as per samples.

Cm (L x P x H)

160 x 75 x 75.3

180 x 75 x 75.3

200 x 75 x 75.3

35 x 25

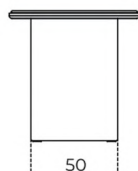
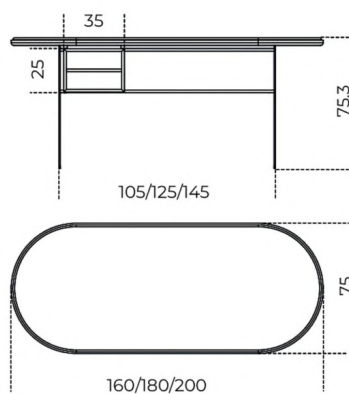
Inches (L x P x H)

63 x 29³/₄ x 29³/₄

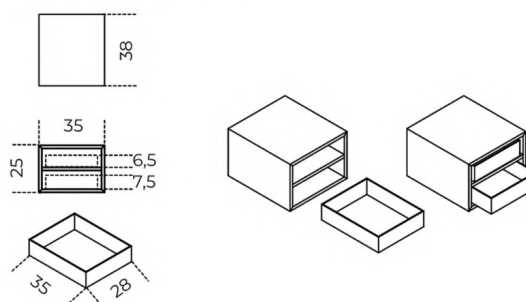
71 x 29³/₄ x 29³/₄

78³/₄ x 29³/₄ x 29³/₄

14 x 10

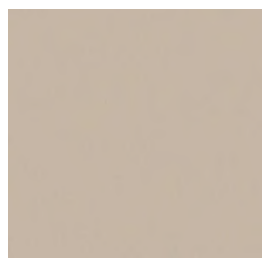


Blocco cassetti/Drawer unit



Finishes

Glass



Bright champagne



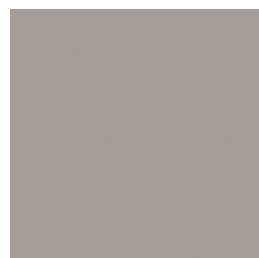
Bright rose powder



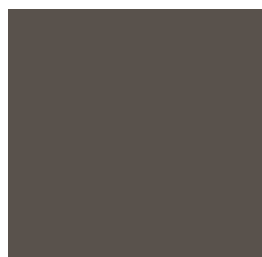
Bright white



Bright green-grey



Bright mink



Bright taupe



Bright cement



Bright olive



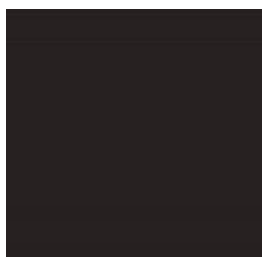
Bright dark grey



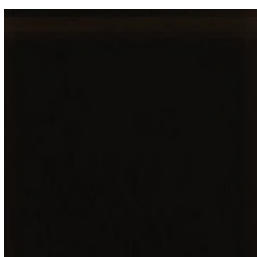
Bright cadet blue



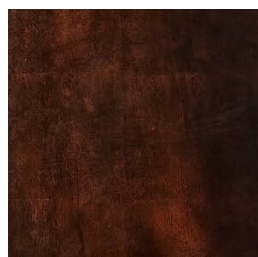
Bright blue-grey



Bright liquorice



Bright black



Rosso Marte

Wood



Deep Black



Black stained open pore
ash

Marble/Stone



Bianco Carrara



Orobico Arabescato
Rosso

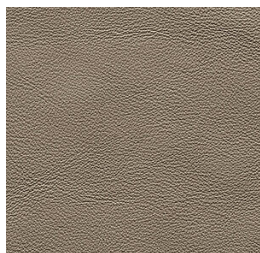


Dover white

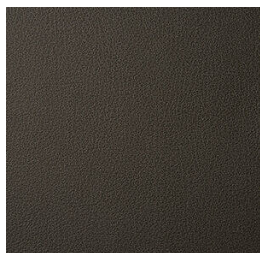


Ceppo di Gré

Leather Cat.L1



Fard clay 2303



Fard anthracite 2379



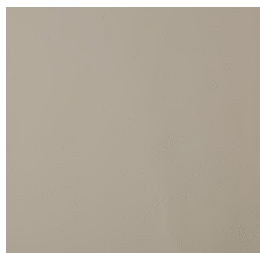
Fard loden green 2357



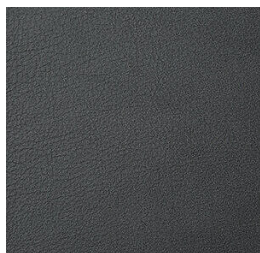
Fard milk 2300



Fard silt 2324



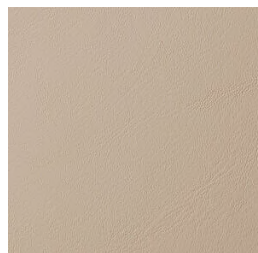
Fard silver 2302



Fard slate 2386



Fard ecru 2304



Fard tan 2305



Fard nude 2334



Fard amber 2343



Fard deer 2346



Fard otter 2348