

m o o o i

## Pooof

MOOOI



The Pooof is your perfect companion at home. Timeless, versatile, solid and soft. At first sight, the sturdiness of the firmly grounded Pooof would not let you imagine how flexible it really is. The easy-going design and height and two available sizes make the Pooof the perfect buddy for almost every sofa in the Moooi collection.

---

### *Detailing*



Pooof comes with the aesthetics and tactility of different removable fabrics, leathers, and covers you can choose for its upholstery.

---

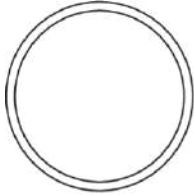
### *Colours*

CAT 1

## Pooof / 120

### Dimensions

Ø 120cm | 47.2"



40cm | 15.8"

### Product

**WIDTH** 120cm | 47.2"  
**HEIGHT** 40cm | 15.7"  
**DEPTH** 120cm | 47.2"  
**DIAMETER** 120cm | 47.2"

### Packaging

**WIDTH** 125cm | 49.2"  
**HEIGHT** 44cm | 17.3"  
**CUBAGE** 0.69m<sup>3</sup> | 24.28ft<sup>3</sup>  
**LENGTH** 125cm | 49.2"  
**WEIGHT** 11.5kg | 25.35lbs

### Technical

#### MATERIAL

Wooden frame, multiple density cut foam, dacron, upholstered in basic white fabric, removable cover with velcro bottom covering.

#### SEAT HEIGHT

40cm | 15.7"

#### SEAT WIDTH

120cm | 47.2"

#### SEATING CAPACITY

1

## Pooof / 70

### Dimensions

Ø 70cm | 27.6"



40cm | 15.8"

### Product

**WIDTH** 70cm | 27.6"  
**HEIGHT** 40cm | 15.7"  
**DEPTH** 70cm | 27.6"  
**DIAMETER** 70cm | 27.6"

### Packaging

**WIDTH** 125cm | 49.2"  
**HEIGHT** 44cm | 17.3"  
**CUBAGE** 0.69m<sup>3</sup> | 24.28ft<sup>3</sup>  
**LENGTH** 125cm | 49.2"  
**WEIGHT** 11.5kg | 25.35lbs

### Technical

**MATERIAL**

Wooden frame, multiple density cut foam, dacron, upholstered in basic white fabric, removable cover with velcro bottom covering.

**SEAT HEIGHT**

40cm | 15.7"

**SEAT WIDTH**

70cm | 27.6"

**SEATING CAPACITY**

1

---

## Upholstery

*Abbracci (available in 6 colours)*

**COMPOSITION**

100% PES

**ABRASION**

50000 martindale  
lightfastness 3 - 4  
pilling 5

**FIRE RESISTANCE**

BS 5852 - Ignition source  
0 (Cigarette)  
BS 5852 - Ignition source  
1 (Match flame equivalent)  
EN 1021-1 (Cigarette)  
EN 1021-2 (Match)  
TB 117-2013

---

*Arda (available in 12 colours)*

**ABRASION**

50000 martindale  
lightfastness 5 - 6  
pilling 4 - 5

**FIRE RESISTANCE**

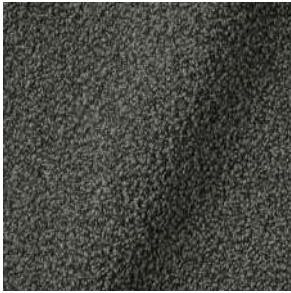
BS 5852 - Ignition source  
0 (Cigarette)  
BS 5852 - Ignition source  
5 (Crib 5)  
BS 5852 - Ignition source  
1 (Match flame equivalent)  
EN 1021-1 (Cigarette)  
EN 1021-2 (Match)  
TB 117-2013  
EU Ecolabel

---

*Autumn (available in 14 colours)*

---

*Boucle (available in 5 colours)*



**COMPOSITION**

43% CO, 14% PA, 12% CV,  
3% PES, 28% PAN

**ABRASION**

40000 martindale  
lightfastness 4 - 6  
pilling 4 - 5

**FIRE RESISTANCE**

EN 1021-1 (Cigarette)  
EN 1021-2 (Match)

---

*Divina 3 (available in 56 colours)*



**COMPOSITION**

100% WO

**ABRASION**

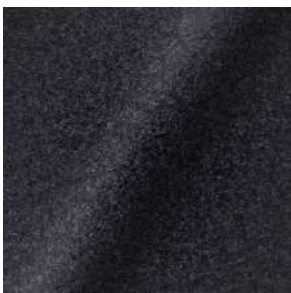
45000 martindale  
lightfastness 7  
pilling 3

**FIRE RESISTANCE**

BS 5852 - Ignition source  
0 (Cigarette)  
BS 5852 - Ignition source  
5 (Crib 5)  
BS 5852 - Ignition source  
1 (Match flame equivalent)  
EN 1021-1 (Cigarette)  
EN 1021-2 (Match)  
TB 117-2013  
EU Ecolabel

---

*Divina MD (available in 27 colours)*



**COMPOSITION**

100% WO

**ABRASION**

45000 martindale  
lightfastness 6  
pilling 3

**FIRE RESISTANCE**

BS 5852 - Ignition source  
0 (Cigarette)  
BS 5852 - Ignition source  
5 (Crib 5)  
BS 5852 - Ignition source  
1 (Match flame equivalent)  
EN 1021-1 (Cigarette)  
EN 1021-2 (Match)  
EU Ecolabel

---

*Divina Melange 3 (available in 49 colours)*



**COMPOSITION**

100% WO

**ABRASION**

45000 martindale  
lightfastness 6 - 7  
pilling 3

**FIRE RESISTANCE**

BS 5852 - Ignition source  
0 (Cigarette)  
BS 5852 - Ignition source  
5 (Crib 5)  
BS 5852 - Ignition source  
1 (Match flame equivalent)  
EN 1021-1 (Cigarette)  
EN 1021-2 (Match)  
TB 117-2013  
EU Ecolabel

---

*Bearded Leopard (available in 3 colours)*



**COMPOSITION**

77% CV, 15% PES, 7% CO,  
1% PA

**ABRASION**

15000 martindale  
lightfastness 4 - 6  
pilling 4

---

*Blushing Sloth (available in 1 colours)*



---

*Calligraphy Bird (available in 4 colours)*



**COMPOSITION**

64% CV, 21% PES, 15%  
CO

**ABRASION**

50000 martindale  
lightfastness 4 - 6  
pilling 5

---

*Dandelion Cranes* (available in 1 colours)



---

*Dodo Pavone* (available in 3 colours)



**COMPOSITION**

12% CO, 88% PES

**ABRASION**

40000 martindale  
lightfastness 5  
pilling 4 - 5

---

*Golden Tiger* (available in 1 colours)



---

*Memento Moooi Medley* (available in 1 colours)



**COMPOSITION**

100% PES

**ABRASION**

50000 martindale  
lightfastness 4 - 6  
pilling 5

**FIRE RESISTANCE**

EN 1021-1 (Cigarette)  
EN 1021-2 (Match)  
TB 117-2013

*Menagerie of Extinct Animals (available in 2 colours)*



**COMPOSITION**

100% PES

**ABRASION**

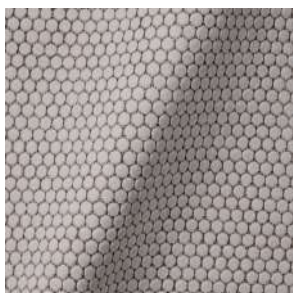
50000 martindale  
lightfastness 4 - 6  
pilling 5

**FIRE RESISTANCE**

EN 1021-1 (Cigarette)  
EN 1021-2 (Match)  
TB 117-2013

---

*Pogo Goat (available in 1 colour)*



*Queen Cobra (available in 1 colour)*



*Rendezvous Tokyo Blue (available in 1 colour)*



**COMPOSITION**

100% PES

**ABRASION**

50000 martindale  
lightfastness 4 - 6  
pilling 5

---

*Blushing Sloth Melange Mohair (available in 1 colours)*



**COMPOSITION**

85% WV, 15% WM

**ABRASION**

15000 martindale  
lightfastness 4 - 6  
pilling 2 - 3

---

*Blushing Sloth Woolly Mohair (available in 1 colours)*



**COMPOSITION**

24% PES, 15% PA, 8% CO,  
24% WM, 29% WV

**ABRASION**

40000 martindale  
lightfastness 4 - 6  
pilling 3 - 4

---

*Fiord 2 (available in 39 colours)*



**COMPOSITION**

92% WV, 8% PA

**ABRASION**

60000 martindale  
lightfastness 6  
pilling 4 - 5

**FIRE RESISTANCE**

EN 1021-1 (Cigarette)  
EN 1021-2 (Match)  
BS 5852 - Ignition source  
0 (Cigarette)  
BS 5852 - Ignition source  
1 (Match flame equivalent)

---

*Guest (available in 13 colours)*

---

*Hallingdal 65 (available in 58 colours)*



**COMPOSITION**

30% CV, 70% WV

**ABRASION**

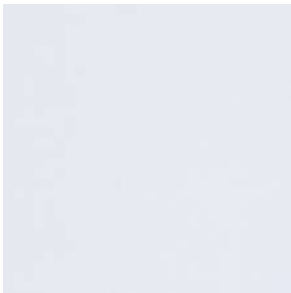
100000 martindale  
lightfastness 7  
pilling 3 - 4

**FIRE RESISTANCE**

BS 5852 - Ignition source  
0 (Cigarette)  
BS 5852 - Ignition source  
5 (Crib 5)  
BS 5852 - Ignition source  
1 (Match flame equivalent)  
EN 1021-1 (Cigarette)  
EN 1021-2 (Match)  
TB 117-2013  
EU Ecolabel

---

*Harald 3 (available in 29 colours)*



**COMPOSITION**

100% CO

**ABRASION**

100000 martindale  
lightfastness 5  
pilling 4 - 5

**FIRE RESISTANCE**

EN 1021-1 (Cigarette)

---

*Justo (available in 11 colours)*



**COMPOSITION**

15% CO, 35% PC, 10% PA,  
40% CV

**ABRASION**

50000 martindale  
lightfastness 5  
pilling 4

**FIRE RESISTANCE**

EN 1021-1 (Cigarette)  
EN 1021-2 (Match)  
TB 117-2013

---

*Liscio (available in 6 colours)*



**COMPOSITION**

35% WO, 35% CV, 21%  
CO, 9% PA

**ABRASION**

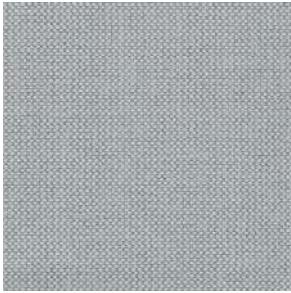
30000 martindale  
lightfastness 4 - 6  
pilling 4

**FIRE RESISTANCE**

TB 117-2013

---

*Merit (available in 43 colours)*



**COMPOSITION**

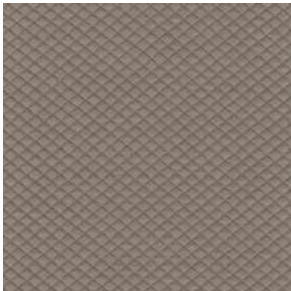
24% PES, 76%

**ABRASION**

85000 martindale  
lightfastness 7  
pilling 4

---

*Mosaic 2 (available in 15 colours)*



**COMPOSITION**

58% PES, 27% WV, 9% PA,  
6% EA

**ABRASION**

100000 martindale  
lightfastness 6 - 7  
pilling 4 - 5

---

*Oray Ray (available in 15 colours)*

**COMPOSITION**

39% LI, 38% CV, 15% PE,  
8% CO

**ABRASION**

30000 martindale  
pilling 4 - 5

**FIRE RESISTANCE**

BS 5852 - Ignition source  
0 (Cigarette)  
BS 5852 - Ignition source  
1 (Match flame equivalent)  
TB 117-2013

---

*Oray Ronan (available in 5 colours)*



**COMPOSITION**

39% LI, 38% CV, 15% PE,  
8% CO

**ABRASION**

30000 martindale  
pilling 4 - 5

**FIRE RESISTANCE**

BS 5852 - Ignition source  
0 (Cigarette)  
BS 5852 - Ignition source  
1 (Match flame equivalent)  
TB 117-2013

*Palette (available in 12 colours)*



**COMPOSITION**

42% CO, 29% WO, 29%  
TL

**ABRASION**

45000 martindale  
lightfastness 4 - 5  
pilling 3 - 3

**FIRE RESISTANCE**

BS 5852 - Ignition source  
0 (Cigarette)  
TB 117-2013  
BS 5852 - Ignition source  
5 (Crib 5)

---

*Reflect (available in 35 colours)*



**COMPOSITION**

10% PA, 90% WV

**ABRASION**

100000 martindale  
lightfastness 5  
pilling 4

---

*Savanne (available in 3 colours)*

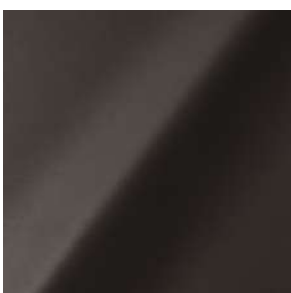


**FIRE RESISTANCE**

EN 1021-1 (Cigarette)  
EN 1021-2 (Match)  
TB 117-2013  
OEKO-TEX

---

*Shade (available in 5 colours)*



**ABRASION**

lightfastness 3 - 4

**FIRE RESISTANCE**

EN 1021-1 (Cigarette)  
EN 1021-2 (Match)  
TB 117-2013

---

*Solis (available in 9 colours)*



**COMPOSITION**

60% WO, 30% PES, 2%  
PA, 3% PC

**ABRASION**

40000 martindale  
lightfastness 5  
pilling 3 - 4

**FIRE RESISTANCE**

EN 1021-1 (Cigarette)  
EN 1021-2 (Match)  
TB 117-2013

---

*Spectrum (available in 11 colours)*



**ABRASION**

lightfastness 6 - 6

**FIRE RESISTANCE**

EN 1021-1 (Cigarette)  
EN 1021-2 (Match)  
TB 117-2013  
OEKO-TEX

---

*Sprinkles (available in 23 colours)*



**ABRASION**

80000 martindale  
lightfastness 7  
pilling 4

**FIRE RESISTANCE**

EU Ecolabel  
BS 5852 - Ignition source  
0 (Cigarette)  
BS 5852 - Ignition source  
5 (Crib 5)  
BS 5852 - Ignition source  
1 (Match flame equivalent)  
EN 1021-1 (Cigarette)  
EN 1021-2 (Match)  
TB 117-2013

---

*Steelcut Trio 3 (available in 54 colours)*



**COMPOSITION**

90% WV, 10% PA

**ABRASION**

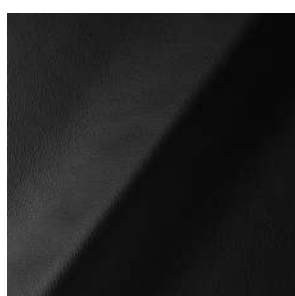
100000 martindale  
lightfastness 5  
pilling 4

**FIRE RESISTANCE**

BS 5852 - Ignition source  
0 (Cigarette)  
BS 5852 - Ignition source  
1 (Match flame equivalent)  
EN 1021-1 (Cigarette)  
EN 1021-2 (Match)  
EU Ecolabel

---

*Ultra (available in 6 colours)*



**ABRASION**

lightfastness 6 - 7

**FIRE RESISTANCE**

EN 1021-1 (Cigarette)  
EN 1021-2 (Match)  
TB 117-2013  
ANSI/BIFMA M7.1 (Total  
Volatile Organic  
Compounds)

---

*Vesper (available in 9 colours)*



**COMPOSITION**

10% CO, 40% LI, 10% PA,  
10% PES, 30% CV

**ABRASION**

40000 martindale  
lightfastness 5  
pilling 4

**FIRE RESISTANCE**

EN 1021-1 (Cigarette)  
EN 1021-2 (Match)  
TB 117-2013

---