

waves

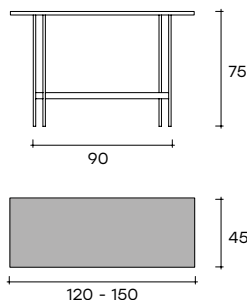
DESIGN LUDOVICA
+ ROBERTO PALOMBA



portata sul piano: 50 kg
load capacity on top: 50 kg

Consolle con piano in DV Glass da 23 mm trasparente, a strisce colorate. Piano disponibile anche in marmo, spessore 20 mm. Base in metallo finitura Titanio opaco oppure Nichel Nero lucido.

Console with 23 mm DV Glass top, available in transparent or in colored striped glass. Top also available in marble, 20 mm thick. Metal base available in opaque Titanium or in Black Glossy Nickel finishes.



STRUTTURA DV-GLASS® DV-GLASS® STRUCTURE



dimensioni L, P, H
dimensions L, W, H
(cm)

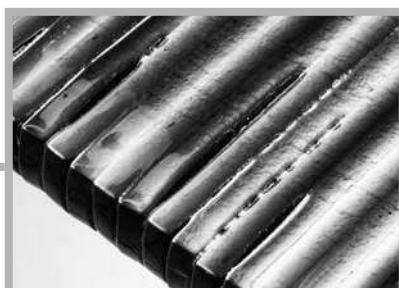
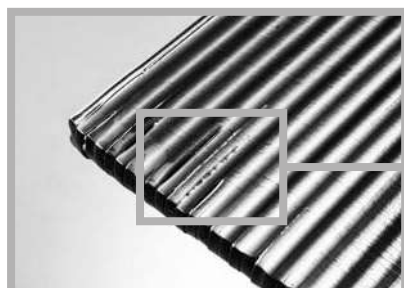
	COD./CODE	L	P/W	H	peso netto net weight (kg)	peso lordo gross weight (kg)	volume imballo package volume (m³)
Consolle con piano in DV Glass trasparente. Console with top made of transparent DV glass.	WAV120...	120	45	75	36	56	0,43
	WAV150...	150	45	75	45	67	0,45
Consolle con piano in DV Glass a strisce fumè, bronzo o multicolor. Console with top made of smoked, bronze or multicolor DV glass.	WAV120...	120	45	75	36	56	0,43
	WAV150...	150	45	75	45	67	0,45
Consolle con piano in marmo Cat.M1. Console with marble top, Cat.M1.	WAV120-...	120	45	75	34	54	0,43
	WAV150...	150	45	75	43	65	0,45
Consolle con piano in marmo Cat.M2. Console with marble top, Cat.M2.	WAV120...	120	45	75	34	54	0,43
	WAV150...	150	45	75	43	65	0,45

RIPIANO INFERIORE _ LOWER SHELF

dimensioni L, P, H <i>dimensions L, W, H</i> (cm)	COD. CONSOLLE <i>CONSOLE CODE</i>	COD. RIPIANO <i>SHELF CODE</i>	L	P/W	H	peso netto <i>net weight</i> (kg)	peso lordo <i>gross weight</i> (kg)	volume imballo <i>package volume</i> (m ³)
Ripiano in vetro temperato trasparente, spess. 8 mm <i>Shelf in tempered transparent glass, 8 mm thick</i>	WAV120 WAV150	WC-RIP/T80	80	30	0,8	5	10	0,03
Ripiano in vetro temperato fumè spess. 8 mm <i>Shelf in tempered smoked glass, 8 mm thick</i>	WAV120 WAV50	WC-RIP/F80	80	30	0,8	5	10	0,03
Ripiano in vetro bronzo <i>Shelf in bronze glass</i>	WAV120 WAV50	WC-RIP/B80	80	30	0,8	5	10	0,03

PIANO IN DV GLASS _ DV-GLASS TOP		BASE IN METALLO _ METAL BASE	CODICE FINITURA <i>FINISH CODE</i>
FINITURA PIANO <i>TOP FINISH</i>		FINITURA BASE <i>BASE FINISH</i>	
Trasparente <i>Transparent</i>	Titanio opaco <i>Opaque Titanium</i>		TI/DV-TR
	Nichel Nero Lucido <i>Black Glossy Nickel</i>		NI/DV-TR
Multicolor <i>Multicolor</i>	Titanio Opaco <i>Opaque Titanium</i>		TI/DV-CO
	Nichel Nero Lucido <i>Black Glossy Nickel</i>		NI/DV-CO
Bronzo <i>Bronze</i>	Titanio Opaco <i>Opaque Titanium</i>		TI/DV-BB
Fumé <i>Smoked</i>	Nichel Nero Lucido <i>Black Glossy Nickel</i>		NI/DV-FF

PIANO IN MARMO _ MARBLE TOP		BASE IN METALLO _ METAL BASE	CODICE FINITURA <i>FINISH CODE</i>
CAT. MARMO <i>MARBLE CAT.</i>	NOME <i>NAME</i>	FINITURA BASE <i>BASE FINISH</i>	
CAT.M1	Mystic Brown	Titanio opaco <i>Opaque Titanium</i>	TI/M1-MB
	Grigio Carnico <i>Carnico Grey</i>	Nichel Nero Lucido <i>Black Glossy Nickel</i>	NI/M1-GC
CAT.M2	Calacatta Royal	Titanio Opaco <i>Opaque Titanium</i>	TI/M2-CR
	Manhattan	Nichel Nero Lucido <i>Black Glossy Nickel</i>	NI/M2-MN



Lievi tracce, avvallamenti superficiali ed irregolarità interne ed esterne alla lastra in vetro sono segni distintivi del processo di fusione ad alta temperatura che ne garantiscono l'artigianalità. Non possono quindi essere oggetto di contestazione.

Slight traces on the surface, internal and external glass plate's irregularities are distinctive signs of the high-temperature fusion process that guarantee its craftsmanship. They cannot therefore be contested.

**FINITURE
FINISHES**

**Base in metallo
Metal base**

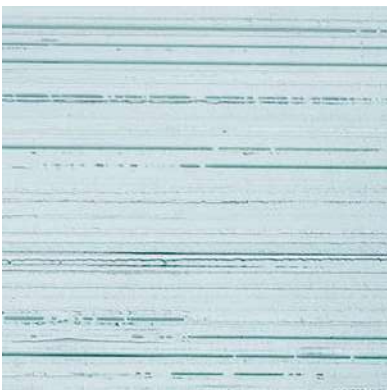


nichel nero lucido
black glossy nickel

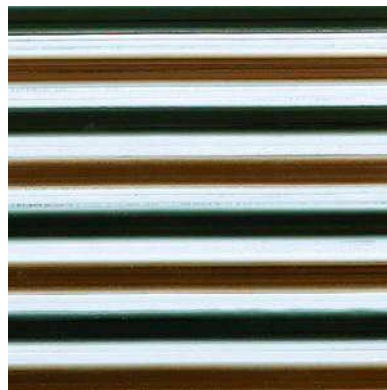


titanio opaco
opaque titanium

**Piano in DV-Glass
DV-Glass top**



vetro fuso trasparente
fused transparent glass



vetro fuso "Multicolor"
fused "Multicolor" glass



vetro fuso fumé
fused smoked glass



vetro fuso bronzo
fused bronze glass

**FINITURE
FINISHES**

**Piani in marmo
Marble top**



grigio carnico
carnico grey



mystic brown
mystic brown



manhattan
manhattan



calacatta royal
calacatta royal