

# Hana Bar Stool Upholstered

SIMONE BONANNI



Hana Bar Stool brings sculptural elegance to any bar or countertop. Its iconic Hana petal-shaped backrest and curved lines boast a minimalist charm. Available in two heights: 65cm and 75cm. The vibrant upholstered seat adds a touch of luxury, complementing the sturdy metal base in black or chrome. A perfect blend of comfort and style for any elevated space.

---

## *Detailing*



Hana Bar Stool can be upholstered in 437 fabrics and offers a frame in black or chrome for added versatility.

---

## *Colours*

CAT II

## Hana Bar Stool Upholstered / High Black Legs

### Dimensions

56cm | 22"



55cm | 21.7"



76cm | 29.9"



114cm | 44.8"

### Product

**WIDTH** 56cm | 22"

**HEIGHT** 114cm | 44.9"

**DEPTH** 55cm | 21.7"

**WEIGHT NETTO** 10.8kg | 23.8lbs

### Packaging

**WIDTH** 56cm | 22"

**HEIGHT** 115cm | 45.3"

**CUBAGE** 0.38m<sup>3</sup> | 13.42ft<sup>3</sup>

**LENGTH** 59cm | 23.2"

**WEIGHT** 6.7kg | 14.77lbs

### Technical

#### MATERIAL

PPGF and Steel

#### SEAT DEPTH

45cm | 17.7"

#### SEAT HEIGHT

76cm | 29.9"

#### SEAT WIDTH

50cm | 19.7"

#### WEIGHT CAPACITY

110kg | 242.51lbs

#### SEATING CAPACITY

1

## Hana Bar Stool Upholstered / High Chrome Legs

### Dimensions

56cm | 22"



55cm | 21.7"



76cm | 29.9"



114cm | 44.8"

### Product

**WIDTH** 56cm | 22"

**HEIGHT** 114cm | 44.9"

**DEPTH** 55cm | 21.7"

**WEIGHT NETTO** 10.8kg | 23.8lbs

### Packaging

**WIDTH** 56cm | 22"

**HEIGHT** 115cm | 45.3"

**CUBAGE** 0.38m<sup>3</sup> | 13.42ft<sup>3</sup>

**LENGTH** 59cm | 23.2"

**WEIGHT** 6.7kg | 14.77lbs

## Technical

### MATERIAL

PPGF and Steel

### SEAT DEPTH

45cm | 17.7"

### SEAT WIDTH

50cm | 19.7"

### SEATING CAPACITY

1

### SEAT HEIGHT

76cm | 29.9"

### WEIGHT CAPACITY

110kg | 242.51lbs

## Hana Bar Stool Upholstered / Low Black Legs

### Dimensions

56cm | 22"



55cm | 21.7"



66cm | 26"



104cm | 41"

### Product

**WIDTH** 56cm | 22"

**HEIGHT** 104cm | 40.9"

**DEPTH** 53cm | 20.9"

**WEIGHT NETTO** 8.2kg |

18.08lbs

### Packaging

**WIDTH** 56cm | 22"

**HEIGHT** 105cm | 41.3"

**CUBAGE** 0.35m<sup>3</sup> | 12.25ft<sup>3</sup>

**LENGTH** 59cm | 23.2"

**WEIGHT** 6.7kg | 14.77lbs

## Technical

### MATERIAL

PPGF and Steel

### SEAT DEPTH

45cm | 17.7"

### SEAT WIDTH

50cm | 19.7"

### SEATING CAPACITY

1

### SEAT HEIGHT

66cm | 26"

### WEIGHT CAPACITY

110kg | 242.51lbs

# Hana Bar Stool Upholstered / Low Chrome Legs

## Dimensions

56cm | 22"



55cm | 21.7"



66cm | 26"



104cm | 41"

## Product

**WIDTH** 56cm | 22"

**HEIGHT** 104cm | 40.9"

**DEPTH** 53cm | 20.9"

**WEIGHT NETTO** 9.1kg | 20.06lbs

## Packaging

**WIDTH** 56cm | 22"

**HEIGHT** 105cm | 41.3"

**CUBAGE** 0.35m<sup>3</sup> | 12.25ft<sup>3</sup>

**LENGTH** 59cm | 23.2"

**WEIGHT** 6.7kg | 14.77lbs

## Technical

### MATERIAL

PPGF and Steel

### SEAT DEPTH

45cm | 17.7"

### SEAT WIDTH

50cm | 19.7"

### SEATING CAPACITY

1

### SEAT HEIGHT

66cm | 26"

### WEIGHT CAPACITY

110kg | 242.51lbs

## Upholstery

*ARDA (available in 12 colours)*



### ABRASION

50000 martindale  
lightfastness 5 - 6  
pilling 4 - 5

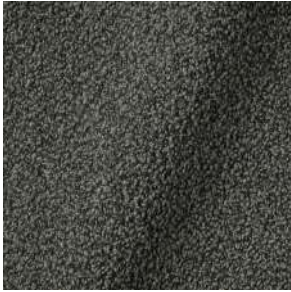
### FIRE RESISTANCE

BS 5852 - Ignition source  
0 (Cigarette)  
BS 5852 - Ignition source  
5 (Crib 5)  
BS 5852 - Ignition source  
1 (Match flame equivalent)  
EN 1021-1 (Cigarette)  
EN 1021-2 (Match)  
TB 117-2013  
EU Ecolabel

*AUTUMN (available in 14 colours)*

---

*BOUCLE (available in 5 colours)*



**COMPOSITION**

43% CO, 14% PA, 12% CV,  
3% PES, 28% PAN

**ABRASION**

40000 martindale  
lightfastness 4 - 6  
pilling 4 - 5

**FIRE RESISTANCE**

EN 1021-1 (Cigarette)  
EN 1021-2 (Match)

---

*DIVINA 3 (available in 56 colours)*



**COMPOSITION**

100% WO

**ABRASION**

45000 martindale  
lightfastness 7  
pilling 3

**FIRE RESISTANCE**

BS 5852 - Ignition source  
0 (Cigarette)  
BS 5852 - Ignition source  
5 (Crib 5)  
BS 5852 - Ignition source  
1 (Match flame equivalent)  
EN 1021-1 (Cigarette)  
EN 1021-2 (Match)  
TB 117-2013  
EU Ecolabel

---

*DIVINA MD (available in 27 colours)*



**COMPOSITION**

100% WO

**ABRASION**

45000 martindale  
lightfastness 6  
pilling 3

**FIRE RESISTANCE**

BS 5852 - Ignition source  
0 (Cigarette)  
BS 5852 - Ignition source  
5 (Crib 5)  
BS 5852 - Ignition source  
1 (Match flame equivalent)  
EN 1021-1 (Cigarette)  
EN 1021-2 (Match)  
EU Ecolabel

---

*DIVINA MELANGE 3* (available in 49 colours)



**COMPOSITION**

100% WO

**ABRASION**

45000 martindale  
lightfastness 6 - 7  
pilling 3

**FIRE RESISTANCE**

BS 5852 - Ignition source  
0 (Cigarette)  
BS 5852 - Ignition source  
5 (Crib 5)  
BS 5852 - Ignition source  
1 (Match flame equivalent)  
EN 1021-1 (Cigarette)  
EN 1021-2 (Match)  
TB 117-2013  
EU Ecolabel

---

*EA, BLUSHING SL* (available in 1 colours)



---

*Calligraphy Bird* (available in 4 colours)



**COMPOSITION**

64% CV, 21% PES, 15%  
CO

**ABRASION**

50000 martindale  
lightfastness 4 - 6  
pilling 5

---

*EA, DANDELION C* (available in 1 colours)



---

*Dodo Pavone (available in 3 colours)*



**COMPOSITION**

12% CO, 88% PES

**ABRASION**

40000 martindale  
lightfastness 5  
pilling 4 - 5

---

*EA, GOLDEN TIGE (available in 1 colour)*



---

*Memento Moooi Medley (available in 1 colour)*



**COMPOSITION**

100% PES

**ABRASION**

50000 martindale  
lightfastness 4 - 6  
pilling 5

**FIRE RESISTANCE**

EN 1021-1 (Cigarette)  
EN 1021-2 (Match)  
TB 117-2013

---

*Menagerie of Extinct Animals (available in 2 colours)*



**COMPOSITION**

100% PES

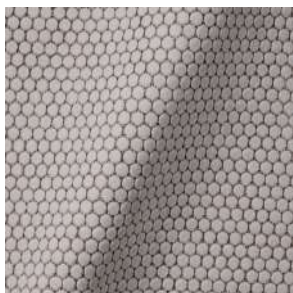
**ABRASION**

50000 martindale  
lightfastness 4 - 6  
pilling 5

**FIRE RESISTANCE**

EN 1021-1 (Cigarette)  
EN 1021-2 (Match)  
TB 117-2013

*EA, POGO GOAT (available in 1 colours)*



---

*EA, QUEEN COBRA (available in 1 colours)*



---

*Rendezvous Tokyo Blue (available in 1 colours)*



**COMPOSITION**

100% PES

**ABRASION**

50000 martindale  
lightfastness 4 - 6  
pilling 5

---

*Blushing Sloth Melange Mohair (available in 1 colours)*



**COMPOSITION**

85% WV, 15% WM

**ABRASION**

15000 martindale  
lightfastness 4 - 6  
pilling 2 - 3

---

*GUEST (available in 13 colours)*

---

*HALLINGDAL 65 (available in 58 colours)*



**COMPOSITION**

30% CV, 70% WV

**ABRASION**

100000 martindale  
lightfastness 7  
pilling 3 - 4

**FIRE RESISTANCE**

BS 5852 - Ignition source  
0 (Cigarette)  
BS 5852 - Ignition source  
5 (Crib 5)  
BS 5852 - Ignition source  
1 (Match flame equivalent)  
EN 1021-1 (Cigarette)  
EN 1021-2 (Match)  
TB 117-2013  
EU Ecolabel

---

*JUSTO (available in 11 colours)*



**COMPOSITION**

15% CO, 35% PC, 10% PA,  
40% CV

**ABRASION**

50000 martindale  
lightfastness 5  
pilling 4

**FIRE RESISTANCE**

EN 1021-1 (Cigarette)  
EN 1021-2 (Match)  
TB 117-2013

---

*LISCIO (available in 6 colours)*



**COMPOSITION**

35% WO, 35% CV, 21%  
CO, 9% PA

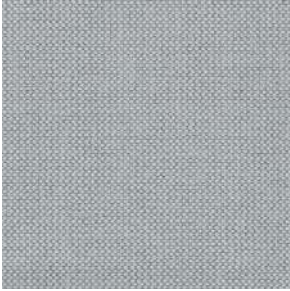
**ABRASION**

30000 martindale  
lightfastness 4 - 6  
pilling 4

**FIRE RESISTANCE**

TB 117-2013

*MERIT (available in 43 colours)*



**COMPOSITION**

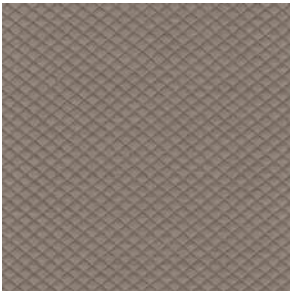
24% PES, 76%

**ABRASION**

85000 martindale  
lightfastness 7  
pilling 4

---

*MOSAIC 2 (available in 15 colours)*



**COMPOSITION**

58% PES, 27% WV, 9% PA,  
6% EA

**ABRASION**

100000 martindale  
lightfastness 6 - 7  
pilling 4 - 5

---

*PALETTE (available in 12 colours)*



**COMPOSITION**

42% CO, 29% WO, 29%  
TL

**ABRASION**

45000 martindale  
lightfastness 4 - 5  
pilling 3 - 3

**FIRE RESISTANCE**

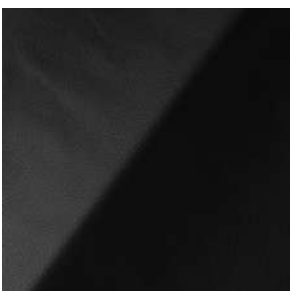
BS 5852 - Ignition source  
0 (Cigarette)  
TB 117-2013  
BS 5852 - Ignition source  
5 (Crib 5)

---

*REFLECT (available in 35 colours)*

---

*SAVANNE (available in 3 colours)*

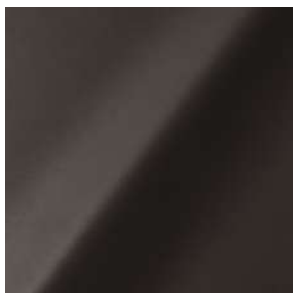


**FIRE RESISTANCE**

EN 1021-1 (Cigarette)  
EN 1021-2 (Match)  
TB 117-2013  
OEKO-TEX

---

*SHADE* (available in 5 colours)



**ABRASION**

lightfastness 3 - 4

**FIRE RESISTANCE**

EN 1021-1 (Cigarette)

EN 1021-2 (Match)

TB 117-2013

---

*SOLIS* (available in 9 colours)



**COMPOSITION**

60% WO, 30% PES, 2%  
PA, 3% PC

**ABRASION**

40000 martindale

lightfastness 5

pilling 3 - 4

**FIRE RESISTANCE**

EN 1021-1 (Cigarette)

EN 1021-2 (Match)

TB 117-2013

---

*SPECTRUM* (available in 11 colours)



**ABRASION**

lightfastness 6 - 6

**FIRE RESISTANCE**

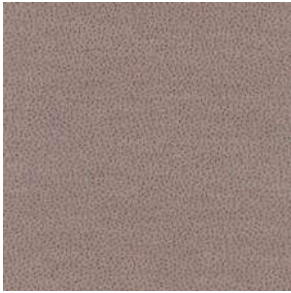
EN 1021-1 (Cigarette)

EN 1021-2 (Match)

TB 117-2013

OEKO-TEX

*SPRINKLES (available in 23 colours)*



**ABRASION**

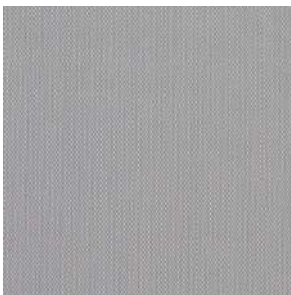
80000 martindale  
lightfastness 7  
pilling 4

**FIRE RESISTANCE**

EU Ecolabel  
BS 5852 - Ignition source  
0 (Cigarette)  
BS 5852 - Ignition source  
5 (Crib 5)  
BS 5852 - Ignition source  
1 (Match flame equivalent)  
EN 1021-1 (Cigarette)  
EN 1021-2 (Match)  
TB 117-2013

---

*STEELCUT TRIO 3 (available in 54 colours)*



**COMPOSITION**

90% WV, 10% PA

**ABRASION**

100000 martindale  
lightfastness 5  
pilling 4

**FIRE RESISTANCE**

BS 5852 - Ignition source  
0 (Cigarette)  
BS 5852 - Ignition source  
1 (Match flame equivalent)  
EN 1021-1 (Cigarette)  
EN 1021-2 (Match)  
EU Ecolabel

---

*ULTRA (available in 6 colours)*



**ABRASION**

lightfastness 6 - 7

**FIRE RESISTANCE**

EN 1021-1 (Cigarette)  
EN 1021-2 (Match)  
TB 117-2013  
ANSI/BIFMA M7.1 (Total  
Volatile Organic  
Compounds)

*VESPER* (available in 9 colours)



**COMPOSITION**

10% CO, 40% LI, 10% PA,  
10% PES, 30% CV

**ABRASION**

40000 martindale  
lightfastness 5  
pilling 4

**FIRE RESISTANCE**

EN 1021-1 (Cigarette)  
EN 1021-2 (Match)  
TB 117-2013

---