

lunar

DESIGN
MATTEO NUNZIATI

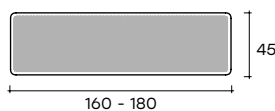
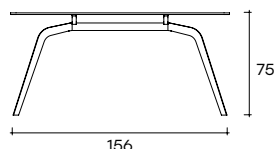
modello registrato
registered model



Consolle con piano in vetro da 12 mm fuso a gran fuoco, temperato e retroverniciato con tinte metallizzate. Base in metallo verniciato, finitura Grigio Lava.

Console with 12 mm fused, tempered and back-lacquered glass top with metallic paints. Painted metal base, "Lava Grey" finish.

portata sul piano: 50 kg
load capacity on top: 50 kg



dimensioni L, P, H
dimensions L, W, H
(cm)

COD./CODE

L

P/W

H

peso netto
net weight
(kg)

peso lordo
gross weight
(kg)

volume imballo
package volume
(m³)

Consolle con piano in vetro fuso.
Console with fused glass top.

LU160/VF- _

160

45

75

39

68

0,43

LU180/VF- _

180

45

75

41

71

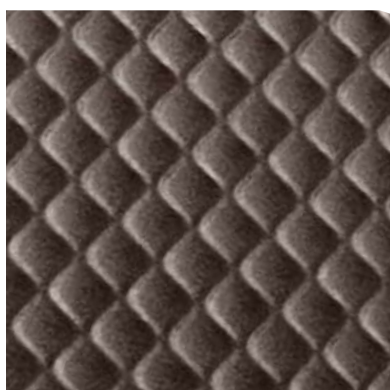
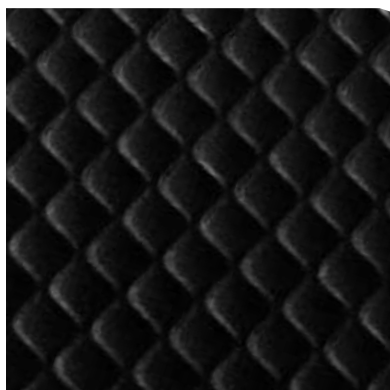
0,45

VETRO RETROVERNICIATO _ BACK PAINTED GLASS

CAT. COLORE COLOR CAT.	COLORI COLORS	Vetro trasparente fuso Fused transparent glass
CAT.2 Tinta metallizzata Metallic color	Grigio lava Lava grey	VF-LA
	Champagne Champagne	VF-CH
	Marrone brillante Brilliant brown	VF-MB
	Nero brillante Brilliant black	VF-NB

Lunar è disponibile anche nelle altre finiture di Cat.2 per vetro fuso. Fare riferimento alla tabella nella bandella di copertina.
Lunar is also available in the other finishes of fused glass Cat.2. Please refer to the chart in the fold flap cover.

FINITURE
FINISHES

Base in metallo
Metal basegrigio lava
lava grey**Piano in vetro fuso retroverniciato**
Back-painted fused glass topgrigio lava
lava greychampagne
champagnenero brillante
brilliant blackmarrone brillante
brilliant brown