

# Big George Armchair

CRISTIÁN MOHADED



The Big George by Cristián Mohaded radiates a warm charm that extends beyond the practical utility of a seater. The expansive dimensions and gentle curves create an irresistible haven for relaxation, instantly turning any space into a serene sanctuary. Big George is more than just a seater; it's a gentle giant ready to embrace you, transforming your living space into a retreat where you can unwind, recharge, and luxuriate in the comforting warmth of a Big hug. Personalise your Big George with our wide range of fabric choices for added style and comfort.

---

## *Detailing*



Grand in size, iconic in design. In Big George, big proportions meet an iconic shape for a statement piece that stands out.

---

## *Colours*

CAT II

---

# Big George Armchair

## Dimensions

140cm | 55.1"



91cm | 35.8"



41cm | 16.1"



70cm | 27.6"

## Product

**WIDTH** 117cm | 46.1"

**HEIGHT** 70cm | 27.6"

**DEPTH** 80cm | 31.5"

**WEIGHT NETTO** 47kg | 103.62lbs

## Packaging

**WIDTH** 118cm | 46.5"

**HEIGHT** 83cm | 32.7"

**CUBAGE** 1.33m<sup>3</sup> | 46.97ft<sup>3</sup>

**LENGTH** 136cm | 53.5"

**WEIGHT** 63kg | 138.89lbs

## Technical

### MATERIAL

Wooden frame, steel springs, foam

### HEIGHT ARMREST

56cm | 22"

### HEIGHT ARMREST 2

44.5cm | 17.5"

### SEAT DEPTH

65cm | 25.6"

### SEAT HEIGHT

41cm | 16.1"

### SEAT WIDTH

60cm | 23.6"

### WEIGHT CAPACITY

110kg | 242.51lbs

## Upholstery

*ABBRACCI (available in 6 colours)*



### COMPOSITION

100% PES

### ABRASION

50000 martindale  
lightfastness 3 - 4  
pilling 5

### FIRE RESISTANCE

BS 5852 - Ignition source  
0 (Cigarette)  
BS 5852 - Ignition source  
1 (Match flame equivalent)  
EN 1021-1 (Cigarette)  
EN 1021-2 (Match)  
TB 117-2013

*ARDA (available in 12 colours)*



**ABRASION**

50000 martindale  
lightfastness 5 - 6  
pilling 4 - 5

**FIRE RESISTANCE**

BS 5852 - Ignition source  
0 (Cigarette)  
BS 5852 - Ignition source  
5 (Crib 5)  
BS 5852 - Ignition source  
1 (Match flame equivalent)  
EN 1021-1 (Cigarette)  
EN 1021-2 (Match)  
TB 117-2013  
EU Ecolabel

---

*AUTUMN (available in 14 colours)*

---

*BOUCLE (available in 5 colours)*



**COMPOSITION**

43% CO, 14% PA, 12% CV,  
3% PES, 28% PAN

**ABRASION**

40000 martindale  
lightfastness 4 - 6  
pilling 4 - 5

**FIRE RESISTANCE**

EN 1021-1 (Cigarette)  
EN 1021-2 (Match)

---

*DIVINA 3 (available in 56 colours)*



**COMPOSITION**

100% WO

**ABRASION**

45000 martindale  
lightfastness 7  
pilling 3

**FIRE RESISTANCE**

BS 5852 - Ignition source  
0 (Cigarette)  
BS 5852 - Ignition source  
5 (Crib 5)  
BS 5852 - Ignition source  
1 (Match flame equivalent)  
EN 1021-1 (Cigarette)  
EN 1021-2 (Match)  
TB 117-2013  
EU Ecolabel

*DIVINA MD (available in 27 colours)*



**COMPOSITION**  
100% WO

**ABRASION**  
45000 martindale  
lightfastness 6  
pilling 3

**FIRE RESISTANCE**  
BS 5852 - Ignition source  
0 (Cigarette)  
BS 5852 - Ignition source  
5 (Crib 5)  
BS 5852 - Ignition source  
1 (Match flame equivalent)  
EN 1021-1 (Cigarette)  
EN 1021-2 (Match)  
EU Ecolabel

---

*Bearded Leopard (available in 3 colours)*



**COMPOSITION**  
77% CV, 15% PES, 7% CO,  
1% PA

**ABRASION**  
15000 martindale  
lightfastness 4 - 6  
pilling 4

---

*EA, BLUSHING SL (available in 1 colours)*



---

*Calligraphy Bird (available in 4 colours)*



**COMPOSITION**  
64% CV, 21% PES, 15%  
CO

**ABRASION**  
50000 martindale  
lightfastness 4 - 6  
pilling 5

*EA, DANDELION C (available in 1 colours)*



---

*Dodo Pavone (available in 3 colours)*



**COMPOSITION**

12% CO, 88% PES

**ABRASION**

40000 martindale

lightfastness 5

pilling 4 - 5

---

*EA, GOLDEN TIGE (available in 1 colours)*



---

*EA, QUEEN COBRA (available in 1 colours)*



*Blushing Sloth Melange Mohair (available in 1 colours)*



**COMPOSITION**

85% WV, 15% WM

**ABRASION**

15000 martindale  
lightfastness 4 - 6  
pilling 2 - 3

---

*Blushing Sloth Woolly Mohair (available in 1 colours)*



**COMPOSITION**

24% PES, 15% PA, 8% CO,  
24% WM, 29% WV

**ABRASION**

40000 martindale  
lightfastness 4 - 6  
pilling 3 - 4

---

*FIORD (available in 39 colours)*



**COMPOSITION**

92% WV, 8% PA

**ABRASION**

60000 martindale  
lightfastness 6  
pilling 4 - 5

**FIRE RESISTANCE**

EN 1021-1 (Cigarette)  
EN 1021-2 (Match)  
BS 5852 - Ignition source  
0 (Cigarette)  
BS 5852 - Ignition source  
1 (Match flame equivalent)

---

*GUEST (available in 13 colours)*

---

*HALLINGDAL 65 (available in 58 colours)*



**COMPOSITION**

30% CV, 70% WV

**ABRASION**

100000 martindale  
lightfastness 7  
pilling 3 - 4

**FIRE RESISTANCE**

BS 5852 - Ignition source  
0 (Cigarette)  
BS 5852 - Ignition source  
5 (Crib 5)  
BS 5852 - Ignition source  
1 (Match flame equivalent)  
EN 1021-1 (Cigarette)  
EN 1021-2 (Match)  
TB 117-2013  
EU Ecolabel

---

*JUSTO (available in 11 colours)*



**COMPOSITION**

15% CO, 35% PC, 10% PA,  
40% CV

**ABRASION**

50000 martindale  
lightfastness 5  
pilling 4

**FIRE RESISTANCE**

EN 1021-1 (Cigarette)  
EN 1021-2 (Match)  
TB 117-2013

---

*LISCIO (available in 6 colours)*



**COMPOSITION**

35% WO, 35% CV, 21%  
CO, 9% PA

**ABRASION**

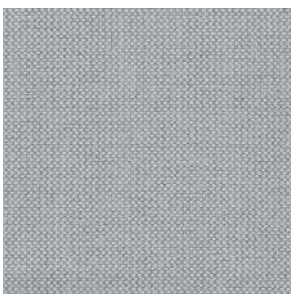
30000 martindale  
lightfastness 4 - 6  
pilling 4

**FIRE RESISTANCE**

TB 117-2013

---

*MERIT (available in 43 colours)*



**COMPOSITION**

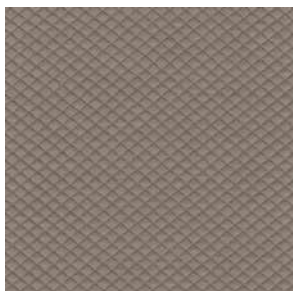
24% PES, 76%

**ABRASION**

85000 martindale  
lightfastness 7  
pilling 4

---

*MOSAIC 2 (available in 15 colours)*



**COMPOSITION**

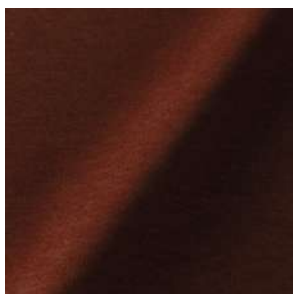
58% PES, 27% WV, 9% PA,  
6% EA

**ABRASION**

100000 martindale  
lightfastness 6 - 7  
pilling 4 - 5

---

*PALETTE (available in 12 colours)*



**COMPOSITION**

42% CO, 29% WO, 29%  
TL

**ABRASION**

45000 martindale  
lightfastness 4 - 5  
pilling 3 - 3

**FIRE RESISTANCE**

BS 5852 - Ignition source  
0 (Cigarette)  
TB 117-2013  
BS 5852 - Ignition source  
5 (Crib 5)

---

*REFLECT (available in 35 colours)*

---

*REMIX 3 (available in 54 colours)*



**COMPOSITION**

10% PA, 90% WV

**ABRASION**

100000 martindale  
lightfastness 5  
pilling 4

*SAVANNE (available in 3 colours)*



**FIRE RESISTANCE**

EN 1021-1 (Cigarette)  
EN 1021-2 (Match)  
TB 117-2013  
OEKO-TEX

---

*SHADE (available in 5 colours)*



**ABRASION**

lightfastness 3 - 4

**FIRE RESISTANCE**

EN 1021-1 (Cigarette)  
EN 1021-2 (Match)  
TB 117-2013

---

*SOLIS (available in 9 colours)*



**COMPOSITION**

60% WO, 30% PES, 2%  
PA, 3% PC

**ABRASION**

40000 martindale  
lightfastness 5  
pilling 3 - 4

**FIRE RESISTANCE**

EN 1021-1 (Cigarette)  
EN 1021-2 (Match)  
TB 117-2013

---

*SPECTRUM (available in 11 colours)*



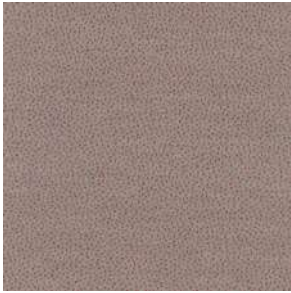
**ABRASION**

lightfastness 6 - 6

**FIRE RESISTANCE**

EN 1021-1 (Cigarette)  
EN 1021-2 (Match)  
TB 117-2013  
OEKO-TEX

*SPRINKLES (available in 23 colours)*



**ABRASION**

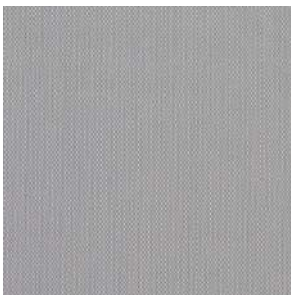
80000 martindale  
lightfastness 7  
pilling 4

**FIRE RESISTANCE**

EU Ecolabel  
BS 5852 - Ignition source  
0 (Cigarette)  
BS 5852 - Ignition source  
5 (Crib 5)  
BS 5852 - Ignition source  
1 (Match flame equivalent)  
EN 1021-1 (Cigarette)  
EN 1021-2 (Match)  
TB 117-2013

---

*STEELCUT TRIO 3 (available in 54 colours)*



**COMPOSITION**

90% WV, 10% PA

**ABRASION**

100000 martindale  
lightfastness 5  
pilling 4

**FIRE RESISTANCE**

BS 5852 - Ignition source  
0 (Cigarette)  
BS 5852 - Ignition source  
1 (Match flame equivalent)  
EN 1021-1 (Cigarette)  
EN 1021-2 (Match)  
EU Ecolabel

---

*ULTRA (available in 6 colours)*



**ABRASION**

lightfastness 6 - 7

**FIRE RESISTANCE**

EN 1021-1 (Cigarette)  
EN 1021-2 (Match)  
TB 117-2013  
ANSI/BIFMA M7.1 (Total  
Volatile Organic  
Compounds)

*VESPER* (available in 9 colours)



**COMPOSITION**

10% CO, 40% LI, 10% PA,  
10% PES, 30% CV

**ABRASION**

40000 martindale  
lightfastness 5  
pilling 4

**FIRE RESISTANCE**

EN 1021-1 (Cigarette)  
EN 1021-2 (Match)  
TB 117-2013

---